

OptiPrep™ Mini-Review MS07

Analysis of membrane trafficking in mammalian tissues and cells: fractionation of ER, Golgi, TGN, PM and endosomes

- ◆ This Mini-Review provides in Sections 1-5 a brief summary of some of the OptiPrep™ methodology and in Section 6 a comprehensive list of references

1. Continuous iodixanol buoyant density gradients

One of the first published papers to report the use of iodixanol gradients for the analysis of endoplasmic reticulum (ER), Golgi and plasma membrane (PM) from COS-7 cells was by Yang et al [1] in 1997. A post-nuclear supernatant, loaded on to a 0-26% (w/v) iodixanol gradient was centrifuged at 200,000 g for approx. 2 h. Analysis of the gradient established that the density of the three major membrane compartments increased in the order PM<Golgi<ER (see Fig. 1) and that banding sequence has been widely observed for the membranes from many other, but not all, mammalian cultured cells. This gradient and centrifugation format (spanning an approximate density range of 1.04-1.075 g/ml) has since been widely used at broadly similar (g x time) factors e.g. 280,000 g for 2 h and 100-200,000 g for 3 h in a swinging-bucket rotor of approx. tube volume 13 ml (e.g. Beckman SW41Ti). Shorter times at a lower radial centrifugal force (RCF) (e.g. 150,000 g for 1.5 h) may be required for smaller volume rotors (e.g. 5 ml tubes) with a shorter sedimentation path length.

- ◆ This methodology is described in Application Sheet S21

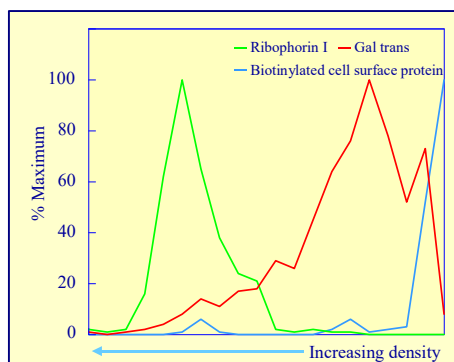


Figure 1: Distribution of Golgi, ER and PM markers from COS-7 cells in a 0-26% iodixanol gradient (115 min at 200,000 g_{av}). Gal trans = galactosyl transferase. Figure adapted from ref 1 with kind permission of the authors and the American Society for Biochemistry and Molecular Biology

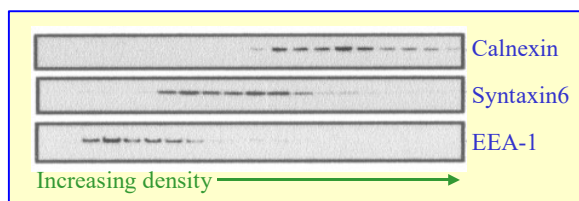


Figure 2 Fractionation of a PNS from CHO cells fractionated on a continuous iodixanol gradient: distribution of ER (calnexin), Golgi (syntaxin6) and early endosome (EEA-1) markers. Reproduced from ref 2 with kind permission of the authors and Macmillan Magazines Ltd.

Some workers maintain that the highest resolution of membrane vesicles is only obtained if the centrifugation is carried out at relative low RCFs for extended time periods; for example 50,000-100,000 g for 18 h. An example is given in Figure 2; an 8-34% (w/v) iodixanol gradient was used to study the processing of the amyloid β peptide from CHO cells stably transfected with PS1 [2]. The gradient gave excellent resolution of early endosomes Golgi and ER. The method has also been able to resolve perinuclear ER from the bulk ER of mouse 3T3 fibroblasts [3]. This long-spin strategy however is not the only one that provides the ability to fractionate sub-domains of the same membrane

compartment (see Section 2)

- ◆ This methodology is described in Application Sheet S22

2. Discontinuous gradients

Discontinuous iodixanol gradients in which the sample is bottom loaded in the densest solution are rather more variable in their detail; most run from 3 or 5% to 25% (w/v) iodixanol in 3.5% or 5% steps (e.g. refs 4 and 5), others are much simpler running from 20%-32% in three steps [6]. The centrifugation times are also variable: 88,000 g for 18 h [5] to 90,000 g for 2.5 h [6]. The banding position of the membranes is also rather variable, but some of this variability may arise from the variety of cell types. The 5-25% iodixanol gradient [5] resolved ER, Golgi and early endosomes from cortical neurons.

- ◆ This methodology is described in Application Sheet S23

There are many more examples in which the discontinuous gradients have been top-loaded. In many cases the gradients span the usual range from of 2.5-30% (w/v) iodixanol, but often neither the increment between each step nor the volume of each step are constant. During the centrifugation, which is never more than 3h, diffusion of iodixanol will occur and a non-linear continuous gradient will form. Non-linear gradients can provide an important feature that may potentially improve the resolution of certain membrane compartments. Figure 3 shows that this gradient effectively resolves ER, TGN and *cis*-Golgi from neuroglioma cells [7]. At the longer centrifugation time separations are certainly based on buoyant density but some of the shorter ones (1 h) are probably sedimentation velocity (see Section 3).

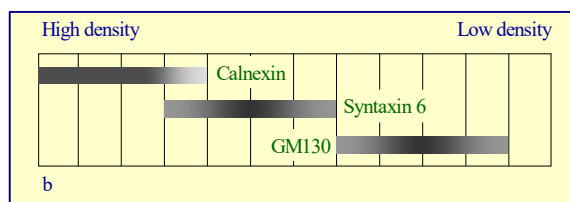


Figure 3 Fractionation of H4 neuroglioma cells, approximate disposition of ER, syntaxin 6 (TGN) and GM130 (*cis*-Golgi). Data adapted from ref 7.

- ◆ **This methodology is described in Application Sheet S24**
- ◆ It is important to note that 5-25% (w/v) iodixanol discontinuous gradients (3h at 90,000 g) were able to resolve mitochondrial associated ER from the bulk of the ER [8-10] and that unlike Percoll™, OptiPrep™ was able to achieve this separation effectively and reliably [11].

3. Sedimentation velocity gradients

This strategy using either a multi-step discontinuous gradient (2.5%, 5%, 7.5%, 10%, 12.5%, 15%, 17.5%, 20%, and 30% (w/v) iodixanol) or a continuous gradient over the same density range were introduced by Majoul et al [12] and Schroder et al [13] respectively. The former was widely used by the St. George-Hyslop group at the Centre for Research in Neurodegenerative Diseases in Toronto [14] for studying the processing of the β -amyloid precursor protein in neuroblastoma cells. The RCFs vary from 54,000-126,000 g and the centrifugation times from 25 to 90 min. An example of the fractionating power of this rapid centrifugation is shown in Figure 4.

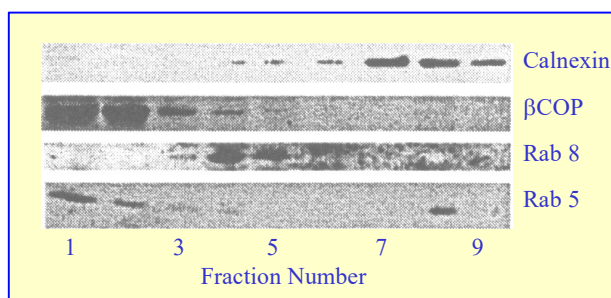


Figure 4 Subcellular fractionation of neuroblastoma (N2a) cells on a 2.5-30% discontinuous iodixanol gradient: immunoblotting of SDS-PAGE on gradient fractions (high density on right). See text for more details. Reproduced from ref 10 with kind permission of the authors and Blackwell Publishing

- ◆ **This methodology is described in Application Sheet S25**
- ◆ **There are also papers reporting the use of a self-generated iodixanol gradient, normally used for the separation of Golgi and smooth and rough ER – see Application Sheets S18 and S20**

4. Pre-gradient strategies

A point worth noting is the widely adopted strategy of using a post-nuclear supernatant (PNS) as a gradient input. It has much to recommend it: notably time-saving, minimal sample manipulations and avoidance of any losses of membrane vesicle material. It should be borne in mind however that, with the exception of nuclei, every other major organelle and membrane vesicle derived from every membrane compartment, are going to band somewhere in the gradient. The use of a more substantial differential centrifugation scheme prior to the gradient was much more commonly used twenty or thirty years ago than is now the case. Removal of major organelle fractions prior to gradient fractionation may improve the purity of membrane vesicle fractions. A classic differential centrifugation scheme of 1000 g for 5-10 min, 3000 g for 10 min and 15,000 g for 15 min however is time-consuming and will lead to progressive loss of vesicles unless each pellet is carefully washed.

Other Application Sheets that are relevant to the fractionation of subcellular membranes are:

- ◆ Application Sheet S01 – Preparation of gradient solutions
- ◆ Application Sheet S03 – Preparation of continuous and discontinuous gradients
- ◆ Application Sheet S04 – Preparation of self-generated gradients
- ◆ Application Sheet S05 – Homogenization of mammalian tissues
- ◆ Application Sheet S06 – Homogenization of mammalian cells
- ◆ Application Sheet S07 – Differential centrifugation of homogenates
- ◆ Application Sheet S08 – Gradient harvesting
- ◆ Application Sheet S09 – Gradient analysis

5. References (for Sections 1-3)

1. Yang, M., Ellenberg, J., Bonifacino, J.S. and Weissman, A.M. (1997) *The transmembrane domain of a carboxyl-terminal anchored protein determines localization to the endoplasmic reticulum* J. Biol. Chem., **272**, 1970-1975
2. Puglielli, L., Konopka, G., Pack-Chung, E., MacKenzie Ingano, L. A., Berezovska, O., Hyman, B.T., Chang, T. Y., Tanzi, R.E. and Kovacs, D.M. (2001) *Acyl-coenzyme A: cholesterol acyltransferase modulates the generation of the amyloid β -peptide* Nature Cell Biol., **3**, 905-912
3. Woods, A.J., Roberts, M.S., Choudhary, J., Barry, S.T., Mazaki, Y., Sabe, H., Morley, S.J., Critchley, D.R. and Norman, J.C. (2002) *Paxillin associates with poly(A)-binding protein 1 at the dense endoplasmic reticulum and the leading edge of migrating cells* J. Biol. Chem., **277**, 6428-6437
4. Decaffmeyer, M., Shugla, Y.V., Dicu, A.O., Thomas, A., Truant, R., Topham, M.K., Brasseur, R. and Epand, R.M. (2008) *Determination of the topology of the hydrophobic segment of mammalian diacylglycerol kinase epsilon in a cell membrane and its relationship to predictions from modeling* J. Mol. Biol., **383**, 797-809
5. Yano, H. and Chao, M.V. (2004) *Mechanisms of neurotrophin receptor vesicular transport* J. Neurobiol., **58**, 244-257
6. Li, Q., Zhang, Y., Marden, J.J., Banfi, B. and Engelhardt, J.F. (2008) *Endosomal NADPH oxidase regulates c-Src activation following hypoxia/reoxygenation injury* Biochem. J., **411**, 531-541
7. Chang, Y., Tesco, G., Jeong, W.J., Lindsley, L., Eckman, E.A., Eckman, C.B., Tanzi, R.E. and Guenette, S.Y. (2003) *Generation of the β -amyloid peptide and the amyloid precursor protein C-terminal fragment γ are potentiated by FE65L1* J. Biol. Chem., **278**, 51100-51107
8. Myhill, N., Lynes, E.M., Nanji, J.A., Blagoveshchenskaya, A.D., Fei, H., Simmen, K.C., Cooper, T.J., Thomas, G. and Simmen, T. (2008) *The subcellular distribution of calnexin is mediated by PACS-2* Mol. Biol. Cell, **19**, 2777-2788
9. Gilady, S.Y., Bui, M., Lynes, E.M., Benson, M.D., Watts, R., Vance, J.E. and Simmen, T. (2010) *Ero1a requires oxidizing and normoxic conditions to localize to the mitochondria-associated membrane (MAM)* Cell Stress Chaperones, **15**, 619-629
10. Bui, M., Gilady, S.Y., Fitzsimmons, R.E.B., Benson, M.D., Lynes, E.M., Gesson, K., Alto, N.M., Strack, S., Scott, J.D. and Simmen, T. (2010) *Rab32 modulates apoptosis onset and mitochondria-associated membrane (MAM) properties* J. Biol. Chem., **285**, 31590-31602
11. Lynes, E.M. and Simmen, T. (2011) *Urban planning of the endoplasmic reticulum (ER): How diverse mechanisms segregate the many functions of the ER* Biochim. Biophys. Acta, **1813**, 1893-1905
12. Majoul, I.V., Bastiaens, P.I.H. and Soling H-D (1996) *Transport of an external Lys-Asp-Glu-Leu (KDEL) protein from the plasma membrane to the endoplasmic reticulum: studies with cholera toxin in Vero cells* J. Cell Biol., **133**, 777-789
13. Schroder, M., Schafer, R. and Friedl, P. (2002) *Induction of protein aggregation in an early secretory compartment by elevation of expression level* Biotechnol. Bioeng., **78**, 131-140
14. Chen, F., Yang, D-S., Petanceska, S., Yang, A., Tandon, A., Yu, G., Rozmahel, R., Ghiso, J., Nishimura, M., Zhang, D.M., Kawarai, T., Levesque, G., Mills, J., Levesque, L., Song, Y-Q., Rogaeva, E., Westaway, D., Mount, H., Gandy, S., St. George-Hyslop, P. and Fraser, P.E (2000) *Carboxyl-terminal fragments of Alzheimer β -amyloid precursor protein accumulate in restricted and unpredicted intracellular compartments in presenilin 1 deficient cells* J. Biol. Chem., **275**, 36794-36802

6. Comprehensive bibliography

Papers have been divided into mammalian cell type (Section 6a) or tissue (Section 6b) Within each group, papers are listed alphabetically according to **first author**. Multiple first author papers are sorted chronologically. Key words in the titles have been **highlighted in blue** to facilitate visual searches for a particular research topic. If the fractionation of more than one cell type is reported in a paper, the reference will appear in each relevant cell section.

6a. Mammalian cells

6a-1 Adipocytes

Khalifeh-Soltani, A., McKleroy, W., Sakuma, S., Cheung, Y.Y., 1,3, Tharp, K., Qiu, Y., Turner, S.M., Chawla, A., Stah, A. and Atabai, K. (2014) *Mfge8 promotes obesity by mediating the uptake of dietary fats and serum fatty acids* Nat. Med., **20**, 175-183

6a-2. Blastocysts

Lee, J-H., Yu, W.H., Kumar, A., Lee, S., Mohan, P.S., Peterhoff, C.M., Wolfe, D.M., Martinez-Vicente, M., et al (2010) *Lysosomal proteolysis and autophagy require presenilin 1 and are disrupted by Alzheimer-related PSI mutations* Cell, **141**, 1146-1158

6a-3. Bronchial epithelial

Bomberger, J.M., Ely, K.H., Bangia, N., Ye, S., Green, K.A., Green, W.R., Enelow, R.I. and Stanton, B.A. (2014) *Pseudomonas aeruginosa Cif protein enhances the ubiquitination and proteasomal degradation of the transporter associated with antigen processing (TAP) and reduces major histocompatibility complex (MHC) class I antigen presentation* J. Biol. Chem., **289**, 152-162

Kwon, S.-H., Pollard, H. and Guggino, W.B. (2007) *Knockdown of NHERF1 enhances degradation of temperature rescued ΔF508 CFTR from the cell surface of human airway cells* Cell Physiol. Biochem., **20**, 763-772

Wang, J., Farris, A.B., Xu, K., Wang, P., Zhang, X., Duong, D.M., Yi, H., Shu, H.-K., Sun, S.-Y. and Wang, Y. (2106) *GPRC5A suppresses protein synthesis at the endoplasmic reticulum to prevent radiation-induced lung tumorigenesis* Nat. Comm., **7**: 11795

6a-4. Caco-2 cells

Jaschke, A., Chung, B., Hesse, D., Kluge, R., Zahn, C., Moser, M., Petzke, K.-J. et al (2012) *The GTPase ARFRP1 controls the lipidation of chylomicrons in the Golgi of the intestinal epithelium* Hum. Mol. Genet., **21**, 3128–3142

6a-5. Carcinoma (incl. HeLa)

Agudo-Ibañez, L., Crespo, P. and Casar, B. (2017) *Analysis of Ras/ERK compartmentalization by subcellular fractionation* In ERK Signaling: Methods and Protocols, Methods Mol. Biol., **1487** (ed. Jiménez, G.) Springer Science+Business Media, New York, pp 151-162

Ahmed, I.S., Rohe, H.J., Twist, K.E. and Craven, R.J. (2010) *Pgrmc1 (progesterone receptor membrane component 1) associates with epidermal growth factor receptor and regulates Erlotinib sensitivity* J. Biol. Chem., **285**, 24775–24782

Barth, S., Edlich, F., Berchner-Pfannschmidt, U., Gneuss, S., Jahreis, G., Hasgall, P.A., Fandrey, J., Wenger, R.H. and Camenisch, G. (2009) *Hypoxia-inducible factor prolyl-4-hydroxylase PHD2 protein abundance depends on integral membrane anchoring of FKBP38* J. Biol. Chem., **284**, 23046–23058

Boulter, E., Garcia-Mata, R., Guilluy, C., Dubash, A., Rossi, G., Brennwald, P.J. and Burrridge, K. (2010) *Regulation of Rho GTPase crosstalk, degradation and activity by RhoGDI1* Nat. Cell Biol., **12**, 477-483

Bui, M., Gilady, S.Y., Fitzsimmons, R.E.B., Benson, M.D., Lynes, E.M., Gesson, K., Alto, N.M., Strack, S., Scott, J.D. and Simmen, T. (2010) *Rab32 modulates apoptosis onset and mitochondria-associated membrane (MAM) properties* J. Biol. Chem., **285**, 31590–31602

Butler, E.C. and Bradbury, N.A. (2015) *Signal dependent ER export of lemur tyrosine kinase 2* BMC Cell Biol., **16**: 26

Chang, K., Wang, T. and Luo, G. (2009) *Proteomics study of the hepatitis C virus replication complex* In: Hepatitis C Methods and Protocols, Methods Mol. Biol., **510** (ed. Tang, H.), Humana Press, Totowa, NJ pp 185-193

Chansard, M., Hong, J.-H., Park, Y.-U., Park, S.K. and Nguyen, M.D. (2011) *Ndel1, Nudel (Noodle): flexible in the cell?* Cytoskeleton, **68**, 540–554

Cuevas, E.P., Eraso, P., Mazón, M.J., Santos, V., Moreno-Bueno, G., Cano, A. and Portillo, F. (2017) *LOXL2 drives epithelial mesenchymal-transition via activation of IRE1-XBP1 signalling pathway* Sci. Rep., **7**: 44988

Du, X., Kumar, J., Ferguson, C., Schulz, T.A., Ong, Y.S., Hong, W., Prinz, W.A., Parton, R.G., Brown, A.J. and Yang, H. (2011) *A role for oxysterol-binding protein-related protein 5 in endosomal cholesterol trafficking* J. Cell Biol., **192**, 121–135

Earley, A.K., Chan, W.M. and Ward, B.M. (2008) *The vaccinia virus B5 protein requires A34 for efficient intracellular trafficking from the endoplasmic reticulum to the site of wrapping and incorporation into progeny virions* J. Virol., **82**, 2161-2169

Fraldi, A., Zito, E., Annunziata, F., Lombardi, A., Cozzolino, M., Monti, M., Spampanato, C., Ballabio, A., Pucci, P., Sitia, R. and Cosma, M.P. (2008) *Multistep, sequential control of the trafficking and function of the multiple sulfatase deficiency gene product, SUMF1 by PDI, ERGIC-53 and ERp44* Human Mol. Genet., **17**, 2610-2621

Gachet, Y., Tournier, S., Lee, M., Lazaris-Karatzas, A., Poulton, T. and Bommer, U.-A. (1999) *The growth-related, translationally controlled protein P23 has properties of a tubulin protein and associates transiently with microtubules during the cell cycle* J. Cell Sci., **112**, 1257-1271

Ghosh, S., Bose, M., Ray, A. and Bhattacharyya, S.N. (2015) *Polysome arrest restricts miRNA turnover by preventing exosomal export of miRNA in growth-retarded mammalian cells* Mol. Biol. Cell, **26**, 1072-1083

Gilady, S.Y., Bui, M., Lynes, E.M., Benson, M.D., Watts, R., Vance, J.E. and Simmen, T. (2010) *Ero1a requires oxidizing and normoxic conditions to localize to the mitochondria-associated membrane (MAM)* Cell Stress Chaperones, **15**, 619–629

Giles, D.K. and Wyrick, P.B. (2008) *Trafficking of chlamydial antigens to the endoplasmic reticulum of infected epithelial cells* Microbes Infect., **10**, 1494-1503

Heaton, N.S., Moshkina, N., Fenouil, R., Gardner, T.J., Aguirre, S., Shah, P.S., Zhao, N., Manganaro, L., Hultquist, J.F. et al (2016) *Targeting viral proteostasis limits influenza virus, HIV, and Dengue virus infection* Immunity, **44**, 46–58

- Hirose, H.**, Arasaki, K., Dohmae, N., Takio, K., Hatsuzawa, K., Nagahama, M., Tani, K., Yamamoto, A., Tohyama, M. and Tagaya, M. (2004) *Implication of ZW10 in membrane trafficking between the endoplasmic reticulum and Golgi* EMBO J., **23**, 1267-1278
- Hood, J.L.**, Brooks, W.H. and Roszman, T.L. (2004) *Differential compartmentalization of the calpain/calpastatin network with the endoplasmic reticulum and Golgi apparatus* J. Biol. Chem., **279**, 43126-43135
- Hu, T.**, Li, C., Cao, Z., Van Raay, T.J., Smith, J.G., Willert, K., Solnica-Krezel, L. and Coffey, R.J. (2010) *Myristoylated Naked2 antagonizes Wnt- β -catenin activity by degrading Dishevelled-1 at the plasma membrane* J. Biol. Chem., **285**, 13561-13568
- Jheng, J.-R.**, Wang, S.-C., Jheng, C.-R. and Horng, J.-T. (2016) *Enterovirus 71 induces dsRNA/PKR-dependent cytoplasmic redistribution of GRP78/BiP to promote viral replication* Emerg. Microbes Infect., **5**: e23
- Kanemoto, S.**, Kobayashi, Y., Yamashita, T., Miyamoto, T. Cui, M., Asada, R., Cui, X., Hino, K., Kaneko, M. et al (2015) *Luman is involved in osteoclastogenesis through the regulation of DC-STAMP expression, stability and localization* J. Cell Sci., **128**, 4353-4365
- Landry, M.-C.**, Sicotte, A., Champagne, C. and Lavoie, J.N. (2009) *Regulation of cell death by recycling endosomes and Golgi membrane dynamics via a pathway involving Src-family kinases, Cdc42 and Rab11a* Mol Biol. Cell, **20**, 4091-4106
- Li, C.-C.**, Kuo, J.-C., Waterman, C.M., Kiyama, R., Moss, J. and Vaughan, M. (2011) *Effects of brefeldin A-inhibited guanine nucleotide exchange (BIG) 1 and KANK1 proteins on cell polarity and directed migration during wound healing* Proc. Natl. Acad. Sci. USA, **108**, 19228–19233
- Li, C.-C.**, Le, K., Kato, J., Moss, J. and Vaughan, M. (2016) *Enhancement of β -catenin activity by BIG1 plus BIG2 via Arf activation and cAMP signals* Proc. Natl. Acad. Sci. USA, **113**, 5946–5951
- Li, J.-H.**, Huang, W., Lin, P., Wu, B., Fu, Z.-G., Shen, H.-M., Jing, L., Liu, Z.-Y. et al (2016) *N-linked glycosylation at Asn152 on CD147 affects protein folding and stability: promoting tumour metastasis in hepatocellular carcinoma* Sci. Rep., **6**: 35210
- Li, Q.**, Harraz, M.M., Zhou, W., Zhang, L.N., Ding, W., Zhang, Y., Eggleston, T., Yeaman, C., Banfi, B. and Engelhardt, J.F. (2006) *Nox2 and Rac1 regulate H₂O₂-dependent recruitment of TRAFg to endosomal interleukin-1 receptor complexes* Mol. Cell. Biol., **26**, 140-154
- Li, Q.**, Zhang, Y., Marden, J.J., Banfi, B. and Engelhardt, J.F. (2008) *Endosomal NADPH oxidase regulates c-Src activation following hypoxia/reoxygenation injury* Biochem. J., **411**, 531-541
- Li, Z.**, Zhuang, M., Zhang, L., Zheng, X., Yang, P. and Li, Z. (2016) *Acetylation modification regulates GRP78 secretion in colon cancer cells* Sci. Rep., **6**: 30406
- Liang, J.**, Yin, C., Doong, H., Fang, S., Peterhoff, C., Nixon, R.A. and Monteiro, M.J. (2006) *Characterization of erasin (UBXD2): a new ER protein that promotes ER-associated protein degradation* J. Cell Sci., **119**, 4011-4024
- Liang, X.-J.**, Shen, D.-W., Chen, K.G., Wincovitch, S.M., Garfield, S.H. and Gottesman, M.M. (2005) *Trafficking and localization of platinum complexes in cisplatin-resistant cell lines monitored by fluorescence-labeled platinum* J. Cell. Physiol., **202**, 635-641
- Matsuda, S.**, Matsuda, Y., Snapp, E.L. and D'Adamio, L. (2011) *Maturation of BRI2 generates a specific inhibitor that reduces APP processing at the plasma membrane and in endocytic vesicles* Neurobiol. Aging, **32**, 1400–1408
- Meng, X.**, Embry, A., Rose, L., Yan, B., Xu, C. and Xiang, Y. (2012) *Vaccinia virus A6 is essential for virion membrane biogenesis and localization of virion membrane proteins to sites of virion assembly* J. Virol., **86**, 5603-5613
- Mukherjee, K.**, Ghoshal, B., Ghosh, S., Chakrabarty, Y., Shwetha, S., Das, S. and Bhattacharyya, S.N. (2016) *Reversible HuR-microRNA binding controls extracellular export of miR-122 and augments stress response* EMBO Rep., **17**, 1184-1203
- Mumbengegwi, D.R.**, Li, Q., Li, C., Bear, C.E. and Engelhardt, J.F. (2008) *Evidence for a superoxide permeability in endosomal membranes* Mol. Cell. Biol., **28**, 3700-3712
- Myhill, N.**, Lynes, E.M., Nanji, J.A., Blagoveshchenskaya, A.D., Fei, H., Simmen, K.C., Cooper, T.J., Thomas, G. and Simmen, T. (2008) *The subcellular distribution of calnexin is mediated by PACS-2* Mol. Biol. Cell, **19**, 2777-2788
- Niu, Y.**, Zhang, C., Sun, Z., Hong, Z., Li, K., Sun, D., Yang, Y., Tian, C., Gong, W. and Liu, J.-J. (2013) *PtdIns(4)P regulates retromer-motor interaction to facilitate dynein-cargo dissociation at the trans-Golgi network* Nat. Cell Biol., **15**, 417-429
- Oh, Y.**, Jeon, Y.-J., Hong, G.-S., Kim, I., Woo, H.-N. and Jung, Y.-K. (2012) *Regulation in the targeting of TRAIL receptor 1 to cell surface via GODZ for TRAIL sensitivity in tumor cells* Cell Death Differ., **19**, 1196–1207
- Pourcelot, M.**, Zemirli, N., Da Costa, L.S., Loyant, R., Garcin, D., Vitour, D., Munitic, I., Vazquez, A. and Arnoult, D. (2016) *The Golgi apparatus acts as a platform for TBK1 activation after viral RNA sensing* BMC Biol., **14**: 69

- Raturi, A.**, Gutiérrez, T., Ortiz-Sandoval, C., Ruangkittisakul, A., Herrera-Cruz, M.S., Rockley, J.P., Gesson, K., Ourdev, D. et al (2016) *TMX1 determines cancer cell metabolism as a thiolbased modulator of ER-mitochondria Ca²⁺ flux* J. Cell Biol., **214**, 433–444
- Robb, V.A.**, Gerber, M.A., Hart-Mahon, E.K. and Gutmann, D.H. (2005) *Membrane localization of the U2 domain of protein 4.1B is necessary and sufficient for meningioma growth suppression* Oncogene, **24**, 1946–1957
- Roth, D.**, Lynes, E., Riemer, J., Hansen, H.G., Althaus, N., Simmen, T. and Ellgaard, L. (2010) *A di-arginine motif contributes to the ER localization of the type I transmembrane ER oxidoreductase TMX4* Biochem. J., **425**, 195–205
- Saito, K.**, Yamashiro, K., Shimazu, N., Tanabe, T., Kontani, K. and Katada, T. (2014) *Concentration of Sec12 at ER exit sites via interaction with CTAGE5 is required for collagen export* J. Cell Biol. **206**, 751–762
- Saka, H.A.**, Thompson, J.W., Chen, Y-S., Kumar, Y., Dubois, L.G., Moseley, A. and Valdivia, R.H. (2011) *Quantitative proteomics reveals metabolic and pathogenic properties of Chlamydia trachomatis developmental forms* Mol. Microbiol., **82**, 1185–1203
- Sandin, M.**, Antberg, L., Levander, F. and James, P. (2015) *A Breast Cell Atlas: Organelle analysis of the MDA-MB-231 cell line by density-gradient fractionation using isotopic marking and label-free analysis* EuPA Open Proteomics, **8**, 68–77
- Sane, S.**, Abdullah, A., Boudreau, D.A., Autenried, R.K., Gupta, B.K., Wang, X., Wang, H. et al (2014) *Ubiquitin-like (UBX)-domain-containing protein, UBXN2A, promotes cell death by interfering with the p53-Mortalin interactions in colon cancer cells* Cell Death Dis., **5**: e1118
- Shi, J.**, Chou, B., Choi, J.L., Ta, A.L. and Pun, S.H. (2013) *Investigation of polyethylenimine/DNA polyplex transfection to cultured cells using radiolabeling and subcellular fractionation methods* Mol. Pharm., **10**, 2145–2156
- Shiwaku, H.**, Yoshimura, N., Tamura, T., Sone, M., Ogishima, S., Watase, K., Tagawa, K. and Okazawa, H. (2010) *Suppression of the novel ER protein Maxer by mutant ataxin-1 in Bergman glia contributes to non-cell-autonomous toxicity* EMBO J., **29**, 2446–2460
- Tasetto, M.**, Maizel, A., Osorio, J. and Joliot, A. (2005) *Plant and animal homeodomains use convergent mechanisms for intercellular transfer* EMBO Rep., **6**, 885–890
- Thorne, R.F.**, Ralston, K.J., de Bock, C.E., Mhaidat, N.M., Zhang, X.D., Boyd, A.W. and Burns, G.F. (2010) *Palmitoylation of CD36/FAT regulates the rate of its post-transcriptional processing in the endoplasmic reticulum* Biochim. Biophys. Acta, **1803**, 1298–1307
- Wan, J.**, Zhu, F., Zasadil, L.M., Yu, J., Wang, L., Johnson, A., Berthier, E. et al (2014) *A Golgi-localized pool of the mitotic checkpoint component Mad1 controls integrin secretion and cell migration* Curr. Biol., **24**, 2687–2692
- Wanga, Y-N.**, Wang, H., Yamaguchi, H., Lee, H-J., Lee, H-H. and Hung, M-C. (2010) *COPI-mediated retrograde trafficking from the Golgi to the ER regulates EGFR nuclear transport* Biochem. Biophys. Res. Comm., **399**, 498–504
- Witze, E.S.**, Connacher, M.K., Houel, S., Schwartz, M.P., Morphew, M.K., Reid, L., Sacks, D.B., Anseth, K.S. and Ahn, N.G. (2013) *Wnt5a directs polarized calcium gradients by recruiting cortical endoplasmic reticulum to the cell trailing edge* Dev. Cell, **26**, 645–657
- Wolf, J.**, Reimer, T.A., Schuck, S., Rüder, C., Gerlach, F., Müller, E-C., Otto, A., Dörken, B. Rehm, A. (2010) *Role of EBAG9 protein in coat protein complex I-dependent glycoprotein maturation and secretion processes in tumor cells* FASEB J., **24**, 4000–4019
- Wu, X.**, Meng, X., Yan, B., Rose, L., Deng, J. and Xiang, Y. (2012) *Vaccinia virus virion membrane biogenesis protein A11 associates with viral membranes in a manner that requires the expression of another membrane biogenesis protein, A6* J. Virol., **86**, 11276–11286
- Yang, X.**, Yu, W., Shi, L., Sun, L., Liang, J., Yi, X., Li, Q., Zhang, Y., Yang, F., Han, X., Zhang, D., Yang, J., Yao, Z. and Shang, Y. (2011) *HAT4, a Golgi apparatus-anchored B-type histone acetyltransferase, acetylates free histone H4 and facilitates chromatin assembly* Mol. Cell, **44**, 39–50
- Yu, J.**, Chia, J., Canning, C.A., Jones, M., Bard, F.A. and Virshup, D.M. (2014) *WLS retrograde transport to the endoplasmic reticulum during Wnt secretion* Dev. Cell, **29**, 277–291

6a-6. Cardiomyocytes

- Tseng, L.T-L.**, Lin, C-L., Tzen, K-Y., Chang, S.C. and Chang, M-F. (2013) *LMBDI Protein serves as a specific adaptor for insulin receptor internalization* J. Biol. Chem., **288**, 32424–32432

6a-7. CHO cells

- Andersen, O.M.**, Reiche, J., Schmidt, V., Gotthardt, M., Spoelgen, R., Behlke, J., von Arnim, C.A.F., Breiderhoff, T. et al (2005) *Neuronal sorting protein-related receptor sorLA/LR11 regulates processing of the amyloid precursor protein* Proc. Natl. Acad. Sci. USA, **102**, 13461–13466

- Apostolou, A.**, Shen, Y., Linag, Y., Luo, J. and Fang, S. (2008) *Armet, a UPR-upregulated protein, inhibits cell proliferation and ER stress-induced cell death* *Expt. Cell Res.*, **314**, 2454-2467
- Augustin, R.**, Riley, J. and Moley, K.H. (2005) *GLUT8 contains a [DE]XXXL[LI] sorting motif and localizes to a late endosomal/lysosomal compartment* *Traffic*, **6**, 1196-1212
- Banerji, S.**, Ngo, M., Lane, C.F., Robinson, C-A., Minogue, S. and Ridgway, N.D. (2010) *Oxysterol binding protein-dependent activation of sphingomyelin synthesis in the Golgi apparatus requires phosphatidylinositol 4-kinase II* *Mol. Biol. Cell*, **21**, 4141-4150
- Baulac, S.**, LaVoie, M.J., Kimberly, W.T., Strahle, J., Wolfe, M.S., Selkoe, D.J. and Xia, W. (2003) *Functional γ -secretase complex assembly in Golgi/trans-Golgi network: interactions among presenilin, nicastrin, Aph1, Pen-2, and γ -secretase substrates* *Neurobiol. Dis.*, **14**, 194-204
- Bhattacharyya, R.**, Barren, C. and Kovacs, D.M. (2013) *Palmitoylation of amyloid precursor protein regulates amyloidogenic processing in lipid rafts* *J. Neurosci.*, **33**, 11169-11183
- Campbell, C.**, Beug, S., Nickerson, P.E.B., Peng, J., Mazerolle, C., Bassett, E.A., Ringuette, R., Jama, F.A. et al (2016) *Sortilin regulates sorting and secretion of Sonic hedgehog* *J. Cell Sci.*, **129**, 3832-3844
- Campbell, W.A.**, Iskandar, M-K., Reed, M.L.O. and Xia, W. (2002) *Endoproteolysis of presenilin in vitro: inhibition by γ -secretase inhibitors* *Biochemistry*, **41**, 3372-3379
- Campbell, W.A.**, Reed, M.L.O., Strahle, J., Wolfe, M.S. and Xia, W. (2003) *Presenilin endoproteolysis mediated by an aspartyl protease activity pharmacologically distinct from γ -secretase* *J. Neurochem.*, **85**, 1563-1574
- Costantini, C.**, Ko, M.H., Jonas, M.C. and Puglielli, L. (2007) *A reversible form of lysine acetylation in the ER and Golgi lumen controls the molecular stabilization of BACE1* *Biochem. J.*, **407**, 383-395
- Esler, W.P.**, Das, C., Campbell, W.A., Kimberly, W.T., Kornilova, A.Y., Diehl, T.S., Ye, W. et al (2002) *Amyloid-lowering isocoumarins are not direct inhibitors of γ -secretase* *Nat. Cell Biol.*, **4**, E110
- Giraud, C.G.** and Maccioni, J.F. (2003) *Endoplasmic reticulum export of glycosyltransferases depends on interaction of a cytoplasmic dibasic motif with Sar1* *Mol. Biol. Cell*, **14**, 3753-3766
- Grimsby, J.L.**, Lucero, H.A., Trackman, P.C., Ravid, K. and Kagan, H.M. (2010) *Role of lysyl oxidase propeptide in secretion and enzyme activity* *J. Cell. Biochem.*, **111**, 1231-1243
- Honsho, M.**, Yagita, Y., Kinoshita, N. and Fujuki, Y. (2008) *Isolation and characterization of mutant animal cell line defective in alkyl-dihydroxyacetonephosphate synthase: Localization and transport of plasmalogens to post-Golgi compartments* *Biochim. Biophys. Acta*, **1783**, 1857-1865
- Huttunen, H.J.**, Guénette, S.Y., Peach, C., Greco, C., Zia, W., Kim, D.Y., Barren, C., Tanzi, R.E. and Kovacs, D.M. (2007) *HtrA2 regulates β -amyloid precursor protein (APP) metabolism through endoplasmic reticulum-associated degradation* *J. Biol. Chem.*, **282**, 28285-28295
- Huttunen, H.J.**, Puglielli, L., Ellis, B.C., MacKenzie Ingano, L.A. and Kovacs, D.M. (2009) *Novel N-terminal cleavage of APP precludes $A\beta$ generation in ACAT-defective AC29 cells* *J. Mol. Neurosci.*, **37**, 6-15
- Huttunen, H.J.**, Peach, C., Bhattacharyya, R., Barren, C., Pettingell, W., Hutter-Paier, B., Windisch, M., Berezovska, O. and Kovacs, D.M. (2009) *Inhibition of acyl-coenzyme A: cholesterol acyl transferase modulates amyloid precursor protein trafficking in the early secretory pathway role in the pathogenesis of Alzheimer's disease (AD)* *FASEB J.*, **23**, 3819-3828
- Ikonomov, O.C.**, Fligger, J., Sbrissa, D., Dondapati, R., Mlak, K., Deeb, R. and Shisheva, A. (2009) *Kinesin adapter JLP links PIKfyve to microtubule-based endosome-to-trans-Golgi network traffic of furin* *J. Biol. Chem.*, **284**, 3750-3761
- Kimberly, W.T.**, LaVoie, M.J., Ostaszewski, B.L., Ye, W., Wolfe, M.S. and Selkoe, D.J. (2002) *Complex N-linked glycosylated nicastrin associates with active γ -secretase and undergoes tight cellular regulation* *J. Biol. Chem.*, **277**, 35113-35117
- Matenia, D.**, Greishaber, B., Li, X-y., Thiessen, A., Johne, C., Jiao, J., Mandelkow, E. and Mandelkow, E-M. (2005) *PAK5 kinase is an inhibitor of MARK/Par-1, which leads to stable microtubules and dynamic actin* *Mol. Biol. Cell*, **16**, 4410-4422
- Meli, G.**, Lecci, A. and Cattaneo, A. (2010) *Targeting intracellular $A\beta$ oligomers through conformational intrabodies* *Alzheimers Dementia*, **6**, Suppl 1, S253-S254
- Ohshiro, T.**, Kobayashi, K., Ohba, M., Matsuda, D., Rudel, L.L., Takahashi, T., Doi, T. and Tomoda, H. (2017) *Selective inhibition of sterol O-acyltransferase 1 isozyme by beauveriolide III in intact cells* *Sci. Rep.*, **7**: 4163
- Patrana, D.V.**, Yun, C.H., McKee, M.L. and Fitzgerald, D.J. (2008) *Mammalian cell expression of an active site mutant of Pseudomonas exotoxin disrupts LRP1 maturation* *J. Biomed. Sci.*, **15**, 427-439
- Posavec, M.**, Boskovic, D., Goate, A., Hecimovic, S. and Boskovic, R. (2008) *Subcellular distribution of APP/C99 and amyloid-beta peptide is altered in CHO NPC1-null cells compared to CHOwt* *Alzheimers Dement.*, **4**, Suppl. 1, T353
- Puglielli, L.**, Konopka, G., Pack-Chung, E., MacKenzie Ingano, L .A., Berezovska, O., Hyman, B.T., Chang, T. Y., Tanzi, R.E. and Kovacs, D.M. (2001) *Acyl-coenzyme A: cholesterol acyltransferase modulates the generation of the amyloid β -peptide* *Nat. Cell Biol.*, **3**, 905-912

- Schmidt, V.**, Sporbert, A., Rohe, M., Reimer, T., Rehm, A., Andersen, A.M. and Willnow, T.E. (2007) *SorLA/LR11 regulates processing of amyloid precursor protein via interaction with adaptors GGA and PACS-1* J. Biol. Chem., **282**, 32956-32964
- Schroder, M.**, Schafer, R. and Friedl, P. (2002) *Induction of protein aggregation in an early secretory compartment by elevation of expression level* Biotechnol. Bioeng., **78**, 131-140
- Selkoe, D.J.** (2001) *Presenilin, notch, and the genesis and treatment of Alzheimer's disease* Proc. Natl. Acad. Sci. USA, **98**, 111039-11041
- Selkoe, D.J.**, Xia, W., Kimberly, W.T., Vekrellis, K., Walsh, D., Esler, W.P. and Wolfe, M.S. (2001) *Mechanisms of A β production and A β degradation: routes to the treatment of Alzheimer's disease* In Alzheimer's Disease: Advances in Etiology, Pathogenesis and Therapeutics (Eds Iqbal, K. Sisodia, S.S. and Winblad, B.), John Wiley Ltd. pp. 421-432
- Uliana, A.S.**, Giraudo, C.G. and Maccioni, H.J.F. (2006) *Cytoplasmic tails of SialT2 and GalNacT impose their respective proximal and distal Golgi localization* Traffic, **7**, 604-612
- Uliana, A.S.**, Crespo, P.M., Martina, J.A., Daniotti, J.L. and Maccioni, H.J.F. (2006) *Modulation of GalT1 and SialT1 sub-Golgi localization by SialT2 expression reveals an organellar level of glycolipid synthesis control* J. Biol. Chem., **281**, 32852-32860
- Urano, Y.**, Watanabe, H., Murphy, S.R., Shibuya, Y., Geng, Y., Peden, A.A., Chang, C.C.Y. and Chang, T.Y. (2008) *Transport of LDL-derived cholesterol from the NPC1 compartment to the ER involves the trans-Golgi network and the SNARE protein complex* Proc. Natl. Acad. Sci. USA, **105**, 16513-16518
- Walsh, D.M.**, Klyubin, I., Fadeeva, J.V., Cullen, W.K., Anwyl, R., Wolfe, M.S., Rowan, M.J. and Selkoe, D.J. (2002) *Naturally secreted oligomers of amyloid β protein potently inhibit hippocampal long-term potentiation in vivo* Nature, **416**, 535-539
- Wolfe, M.S.**, Xia, W., Ostraszewski, B.L., Diehl, T.S., Kimberly, W.T. and Selkoe, D.J. (1999) *Two transmembrane aspartates in presenilin-1 required for presenilin endoproteolysis and γ -secretase activity* Nature **398**, 513-517
- Xia, W.**, Zhang, J., Ostraszewski, B.L., Kimberly, W.T., Seubert, P., Koo, E.H., Shen, J. and Selkoe, D.J. (1998) *Presenilin 1 regulates the processing of β -amyloid precursor protein C-terminal fragments and the generation of amyloid β -protein in endoplasmic reticulum and Golgi* Biochemistry, **37**, 16465-71
- Xia, W.**, Ray, W.J., Ostraszewski, B.L., Rahmati, T., Kimberly, W.T., Wolfe, M.S., Zhang, J., Goate, A.M. and Selkoe, D. (2000) *Presenilin complexes with the C-terminal fragments of amyloid precursor protein at the sites of amyloid β -protein generation* Proc. Natl. Acad. Sci. USA, **97**, 9299-9304
- Xu, D.**, Wang, Z., Zhang, Y., Jiang, W., Pan, Y., Song, B-L. and Chen, Y. (2015) *PAQR3 modulates cholesterol homeostasis by anchoring Scap/SREBP complex to the Golgi apparatus* Nat. Commun., **6**: 8100
- Zhang, J.**, Kang, D.E., Xia, W., Okochi, M., Mori, H., Selkoe, D.J. and Koo, E.H. (1998) *Subcellular distribution and turnover of presenilins in transfected cells* J. Biol. Chem., **273**, 12436-12442

6a-8. CHO 7PA2/7WD4 cells

- Meli, G.**, Lecci, A., Manca, A., Krako, N., Albertini, V., Benussi, L., Ghidoni, R. and Cattaneo, A. (2014) *Conformational targeting of intracellular A β oligomers demonstrates their pathological oligomerization inside the endoplasmic reticulum* Nat. Comm., **5**: 3867

6a-9. COS cells

- Chen, S.S-L.**, Lee, S-F. and Wang, C-T. (2001) *Cellular membrane-binding ability of the C-terminal cytoplasmic domain of human immunodeficiency virus type 1 envelope transmembrane protein gp41* J. Virol., **75**, 9925-9938
- Cole, N.B.**, Ellenberg, J., Song, J., DiEuliis, D. and Lippincott-Schwarz, J. (1998) *Retrograde transport of Golgi-localized proteins to the ER* J. Cell Biol., **140**, 1-15
- Decaffmeyer, M.**, Shugla, Y.V., Dicu, A.O., Thomas, A., Truant, R., Topham, M.K., Brasseur, R. and Epanand, R.M. (2008) *Determination of the topology of the hydrophobic segment of mammalian diacylglycerol kinase epsilon in a cell membrane and its relationship to predictions from modeling* J. Mol. Biol., **383**, 797-809
- Hirota, Y.**, Kurata, Y., Kato, M., Notsu, T., Koshida, S., Inoue, T., Kawata, Y., Miake, J. et al (2008) *Functional stabilization of Kv1.5 protein by Hsp70 in mammalian cell lines* Biochem. Biophys. Res. Commun., **372**, 469-474
- Kim, Y.J.**, Guzman-Hernandez, M.L. and Balla, T. (2011) *A highly dynamic ER-derived phosphatidyl-inositol-synthesizing organelle supplies phosphoinositides to cellular membranes* Dev. Cell, **21**, 813-824
- Koshida, S.**, Kurata, Y., Notsu, T., Hirota, Y., Kuang, T.Y., Li, P., Bahrudin, U., Harada, S. et al (2009) *Stabilizing effects of eicosapentaenoic acid on Kv1.5 channel protein expressed in mammalian cells* Eur. J. Pharmacol., **604**, 93-102

Küch, E.-M., Vellaramkalayil, V., Zhang, I., Lehnen, D., Brügger, B., Stremmel, W., Eehalt, R., Poppelreuther, M. and Füllekrug, J. (2014) *Differentially localized acyl-CoA synthetase 4 isoenzymes mediate the metabolic channeling of fatty acids towards phosphatidylinositol* Biochim. Biophys. Acta, **1841**, 227–239

Ohsaki, Y., Sugimoto, Y., Suzuki, M., Hosokawa, H., Yoshimori, T., Davies, J.P. et al (2006) *Cholesterol depletion facilitates ubiquitylation of NPC1 and its association with SKD1/Vps4* J. Cell Sci., **119**, 2643–2653

Olmos, Y., Perdrix-Rosell, A. and Carlton, J.G. (2016) *Membrane binding by CHMP7 coordinates ESCRT-III-dependent nuclear envelope reformation* Curr. Biol., **26**, 2635–2641

Simonova, M., Shtanko, O., Serrgeyev, N., Weissleder, R. and Bogdanov Jr, A. (2003) *Engineering of technetium-99m-binding artificial receptors for imaging gene expression* J. Gene Med., **5**, 1956–1066

Suzuki, S., Kurata, Y., Li, P., Notsu, T., Hasegawa, A., Ikeda, N., Kato, M., Miake, J., Sakata, S., Shiota, G., Yoshida, A., Ninomiya, H., Higaki, K., Yamamoto, K., Shirayoshi, Y. and Hisatome, I. (2012) *Stabilization of Kv1.5 channel protein by bepridil through its action as a chemical chaperone* Eur. J. Pharmacol., **696**, 28–34

Yang, M., Ellenberg, J., Bonifacino, J.S. and Weissman, A.M. (1997) *The transmembrane domain of a carboxyl-terminal anchored protein determines localization to the endoplasmic reticulum* J. Biol. Chem., **272**, 1970–1975

6a-10. Dendritic cells

Imai, J., Hasegawa, H., Maruya, M., Koyasu, S. and Yahara, I. (2005) *Exogenous antigens are processed through the endoplasmic reticulum-associated degradatin (ERAD) in cross-presentation by dendritic cells* Int. Immunol., **17**, 45–53

6a-11. Embryo fibroblasts

Benyair, R., Ogen-Shtern, N., Mazkereth, N., Shai, B., Ehrlich, M. and Lederkremer, G.Z. (2015) *Mammalian ER mannosidase I resides in quality control vesicles, where it encounters its glycoprotein substrates* Mol. Biol. Cell, **26**, 172–184

Curto, M., Cole, B.K., Lallemand, D., Liu, C-H. and McClatchey, A.I. (2007) *Contact-dependent inhibition of EGFR signaling by Nf2/Merlin* J. Cell Biol., **177**, 893–903

Ge, L., Melville, D., Zhang, M. and Schekman, R. (2013) *The ER–Golgi intermediate compartment is a key membrane source for the LC3 lipidation step of autophagosome biogenesis* eLife, **2**: e00947

Ge, L., Zhang, M. and Schekman, R. (2014) *Phosphatidylinositol 3-kinase and COPII generate LC3 lipidation vesicles from the ER–Golgi intermediate compartment* eLife, **3**: e04135

Khalifeh-Soltani, A., McKleroy, W., Sakuma, S., Cheung, Y.Y., 1,3, Tharp, K., Qiu, Y., Turner, S.M., Chawla, A., Stah, A. and Atabai, K. (2014) *Mfge8 promotes obesity by mediating the uptake of dietary fats and serum fatty acids* Nat. Med., **20**, 175–183

Leitman, J., Shenkman, M., Gofman, Y., Shtern, N.O., Ben-Tal, N., Hendershot, L.M. and Lederkremer, G.Z. (2014) *Herp coordinates compartmentalization and recruitment of HRD1 and misfolded proteins for ERAD* Mol. Biol. Cell, **25**, 1050–1060

Marutani, T., Maeda, T., Tanabe, C., Zou, K., Araki, W., Kokame, K., Michikawa, M., Komano, H. (2011) *ER-stress-inducible Herp, facilitates the degradation of immature nicastrin* Biochim. Biophys. Acta, **1810**, 790–798

Mathews, P.M., Guerra, C.B., Jiang, Y., Grbovic, O.M., Kao, B.H., Schmidt, S.D., Dinakar, R. et al (2002) *Alzheimer’s disease-related overexpression of the cation-dependent mannose-6-phosphate receptor increases A β secretion: Role for altered lysosomal hydrolase distribution in β -amyloidogenesis* J. Biol. Chem., **277**, 5299–5307

Molinari, M., Eriksson, K.K., Calanca, V., Galli, C., Cresswell, P., Michalak, M. and Helenius, A. (2004) *Contrasting functions of calreticulin and calnexin in glycoprotein folding and ER quality control* Mol. Cell, **13**, 125–135

Pandey, S., Talukdar, I., Jain, B.P. and Goswami, S.K. (2017) *GSK3 β and ERK regulate the expression of 78 kDa SG2NA and ectopic modulation of its level affects phases of cell cycle* Sci. Rep., **7**: 7555

Pohl, J., Ring, A., Korkmaz, U., Eehalt, R and Stremmel, W. (2005) *FAT/CD36-mediated long-chain fatty acid uptake in adipocytes requires plasma membrane rafts* Mol. Biol. Cell, **16**, 24–31

Poirier, S., Mayer, G., Murphy, S.R., Garver, W.S., Chang, T.Y., Schu, P. and Seidah, N.G. (2013) *The cytosolic adaptor AP-1A is essential for the trafficking and function of Niemann-Pick type C proteins* Traffic, **14**, 458–469

Rai, S., Tanaka, H., Suzuki, M., Ogoh, H., Taniguchi, Y., Morita, Y., Shimada, T., Tanimura, A., Matsui, K., Yokota, T. et al (2014) *Clathrin assembly protein CALM plays a critical role in KIT signaling by regulating its cellular transport from early to late endosomes in hematopoietic cells* PLoS One, **9**: e109441

Ring, A., Le Lay, S., Pohl, J., Verkade, P. and Stremmel, W. (2006) *Caveolin-1 is required for fatty acid translocase (FAT/CD36) localization and function at the plasma membrane of mouse embryonic fibroblasts* Biochim. Biophys. Acta, **1761**, 416–423

- Shulga, Y.V.**, Myers, D.S., Ivanova, P.T., Milne, S.B., Brown, H.A., Topham, M.K. and Epand, R.M. (2010) *Molecular species of phosphatidylinositol-cycle intermediates in the endoplasmic reticulum and plasma membrane* Biochemistry 2010, **49**, 312–317
- Van't Hof, W.** and Resh, M.D. (1997) *Rapid plasma membrane anchoring of newly synthesized p59^{fm} Selective requirement for NH₂-terminal myristoylation and palmitoylation at cysteine-3* J. Cell Biol., **136**, 1023-1035
- Wang, H-Q.**, Nakaya, Y., Du, Z., Yamane, T., Shirane, M., Kudo, T., Takeda, M., Takebayashi, K. et al (2005) *Interaction of presenilins with FKBP38 promotes apoptosis by reducing mitochondrial Bcl-2* Hum. Mol. Genet., **14**, 1889-1902
- Woods, A.J.**, Roberts, M.S., Choudhary, J., Barry, S.T., Mazaki, Y., Sabe, H., Morley, S.J., Critchley, D.R. and Norman, J.C. (2002) *Paxillin associates with poly(A)-binding protein 1 at the dense endoplasmic reticulum and the leading edge of migrating cells* J. Biol. Chem., **277**, 6428-6437
- Woods, A.J.**, White, D.P., Caswell, P.T. and Norman, J.C. (2004) *PKD1/PKC μ promotes $\alpha\beta$ integrin recycling and delivery to nascent focal adhesions* EMBO J., **23**, 2531-2543
- Zou, K.**, Hosono, T., Nakamura, T., Shiraishi, H., Maeda, T., Komano, H., Yanagisawa, K. and Michikawa, M. (2008) *Novel role of presenilins in maturation and transport of integrin β 1* Biochemistry, **47**, 3370-3378

6a-12. Embryo stem cells

- Bergmann, A.**, Hansson, E.M., Pursglove, S.E., Farmery, M.R., Lannfelt, L., Lendahl, U., Lundkvist, J. and Naslund, J. (2004) *Pen-2 is sequestered in the endoplasmic reticulum and subjected to ubiquitylation and proteasome-mediated degradation in the absence of presenilin* J. Biol. Chem., **279**, 16744-16753
- Mulvey, C.M.**, Breckels, L.M., Geladaki, A., Britovšek, N.K., Nightingale, D.J.H., Christoforou, A., Elzek, M., Deery, M.J., Gatto, L. and Lilley, K.S. (2017) *Using hyperLOPIT to perform high-resolution mapping of the spatial proteome* Nat. Protoc., **12**, 1110-1135
- Laudon, H.**, Karlstrom, H., Mathews, P.M., Farmery, M.R., Gandy, S.E., Lundkvist, J., Lendahl, U. and Naslund, J. (2004) *Functional domains in presenilin: The TYR-288 residue controls γ -secretase activity and endoproteolysis* J. Biol. Chem., **279**, 23925-23932
- Siman, R.** and Velji, J. (2003) *Localization of presenilin-nicastrin complexes and γ -secretase activity to the trans-Golgi network* J. Neurochem., **84**, 1143-1153
- Sohaskey, M.L.**, Jiang, Y., Zhao, J.J., Mohr, A., Roemer, F. and Harland, R.M. (2010) *Osteopotential regulates osteoblast maturation, bone formation, and skeletal integrity in mice* J. Cell Biol., **189**, 511–525

6a-13. Endothelial cells

- Herbert, S.P.**, Odell, A.F., Ponnambalam, S. and Walker, J.H. (2007) *The confluence-dependent interaction of cytosolic phospholipase A₂- α with annexin A1 regulates endothelial cell prostaglandin E₂ generation* J. Biol. Chem., **282**, 34468-34478
- Manickam, V.**, Tiwari, A., Jung, J-J., Bhattacharya, R., Goel, A., Mukhopadhyay, D. and Choudhury, A. (2011) *Regulation of vascular endothelial growth factor receptor 2 trafficking and angiogenesis by Golgi localized t-SNARE syntaxin 6* Blood, **117**, 1425-1435
- Wu, R-F.**, Ma, Z., Liu, Z. and Terada, L.S. (2010) *Nox4-derived H₂O₂ mediates endoplasmic reticulum signaling through local Ras activation* Mol. Cell. Biol., **30**, 3553-3568
- Wu, R.F.**, Liao, C., Hatoum, H., Fu, G., Ochoa, C.D. and Terada, L.S. (2017) *RasGRF couples Nox4-dependent endoplasmic reticulum signaling to Ras* Arterioscler. Thromb. Vasc. Biol., **37**: 98-107
- Yamada, K.H.**, Nakajima, Y., Geyer, M., Wary, K.K., Ushio-Fukai, M., Komarova, Y. and Malik, A.B. (2014) *KIF13B regulates angiogenesis through Golgi to plasma membrane trafficking of VEGFR2* J. Cell Sci., **127**, 4518–4530

6a-14. Eosinophils

- Spencer, L.A.**, Melo, R.C.N., Perez, S.A.C., Bafford, S.P., Dvorak, A.M. and Weller, P.F. (2006) *Cytokine receptor-mediated trafficking of preformed IL-4 in eosinophils identifies an innate immune mechanism of cytokine secretion* Proc. Natl. Acad. Sci. USA, **103**, 3333-3338

Glial/glioma cells (see Neuroglioma cells)

6a-15. Glomerular epithelial

- Liu, J.**, Takano, T., Papillon, J., Khadir, A. and Cybulsky, A.V. (2001) *Cytosolic phospholipase A₂- α associates with plasma membrane, endoplasmic reticulum and nuclear membrane in glomerular epithelial cells* Biochem. J., **353**, 79-90

6a-16. HEK cells (see also Kidney cells)

- Ai, L.-S.**, Lee, Y.-W., and Chen, S.S.-L. (2009) *Characterization of hepatitis C virus core protein multimerization and membrane envelopment: revelation of a cascade of core-membrane interactions* J. Virol., **83**, 9923-9939
- Ballar, P.**, Zhong, Y., Nagahama, M., Tagaya, M., Shen, Y. and Fang, S. (2007) *Identification of SVIP as an endogenous inhibitor of endoplasmic reticulum-associated degradation* J. Biol. Chem., **282**, 33908-33914
- Brunkan, A.L.**, Martinez, M., Wang, J., Walker, E.S. and Goate, A.M. (2005) *A domain at the C-terminus of PSI is required for presenilinase and γ -secretase activities* J. Neurochem., **92**, 1158-1169
- Brunkan, A.L.**, Martinez, M., Wang, J., Walker, E.S., Beher, D., Shearman, M.S. and Goate, A.M. (2005) *Two domains within the first putative transmembrane domain of presenilin 1 differentially influence presenilinase and γ -secretase activity* J. Neurochem., **94**, 1315-1328
- Cai, Y.**, Maeda, Y., Cedzich, A., Torres, V.E., Wu, G., Hayashi, T., Mochizuki, T., Park, J.H., Witzgall, R. and Somlo, S. (1999) *Identification and characterization of polycystin-2, the PKD2 gene product* J. Biol. Chem., **274**, 28557-28565
- Campodonico, E.M.**, Roy, C.R. and Ninio, S. (2016) *Legionella pneumophila Type IV effectors YlfA and YlfB are SNARE-like proteins that form homo- and heteromeric complexes and enhance the efficiency of vacuole remodeling* PLoS One, **11**: e0159698
- Chan, W.K.B.**, Chen, V.P., Luk, W.K.W., Choi, R.C.Y. and Tsim, K.W.K. (2012) *N-linked glycosylation of proline-rich membrane anchor (PRiMA) is not required for assembly and trafficking of globular tetrameric acetylcholinesterase* Neurosci., Lett., **523**, 71–75
- Chen, D.**, Sandford, G. and Nicholas, J. (2009) *Intracellular signaling mechanisms and activities of human herpes virus 8 interleukin-6* J. Virol., **83**, 722-733
- Chen, D.**, Choi, Y.B., Sandford, G. and Nicholas, J. (2009) *Determinants of secretion and intracellular localization of human herpesvirus 8 interleukin-6* J. Virol., **83**, 6874-6882
- Chen, V.P.**, Choi, R.C.Y., Chan, W.K.B., Leung, K.W., Guo, A.J.Y., Chan, G.K.L., Luk, W.K.W. and Tsim, K.W.K. (2011) *The assembly of proline-rich membrane anchor (PRiMA)-linked acetylcholine-esterase enzyme – glycosylation is required for enzymatic activity but not for oligomerization* J. Biol. Chem., **286**, 32948–32961
- Chen, W.-T.**, Hsieh, Y.-F., Huang, Y.-J., Lin, C.-C., Lin, Y.-T., Liu, Y.-C., Lien, C.-C. and Cheng, I.H.-J. (2015) *G206D mutation of presenilin-1 reduces Pen2 interaction, increases A β 42/A β 40 ratio and elevates ER Ca²⁺ accumulation* Mol. Neurobiol., **52**, 1835-849
- Chou, C.-H.**, Lee, R.-S., Yang-Yen, H.-F. (2006) *An internal EELD domain facilitates mitochondrial targeting of Mcl-1 via a Tom70-dependent pathway* Mol. Biol. Cell, **17**, 3952-3963
- Cottam, N.P.**, Wilson, K.M., Ng, B.G., Körner, C., Freeze, H.H. and Ungar, D. (2014) *Dissecting functions of the conserved oligomeric Golgi tethering complex using a cell-free assay* Traffic, **15**, 12-21
- Cunningham, M.R.**, McIntosh, K.A., Pediani, J.D., Robben, J., Cooke, A.E., Nilsson, M., Gould, G.W., Mundell, S., Milligan, G. and Plevin, R. (2012) *Novel role for proteinase-activated receptor 2 (PAR₂) in membrane trafficking of proteinase-activated receptor 4 (PAR₄)* J. Biol. Chem., **287**, 16656–16669
- Cunningham, M.R.**, Nisar, S.P., Cooke, A.E., Emery, E.D. and Mundell, S.J. (2013) *Differential endosomal sorting of a novel P2Y₁₂ purinoreceptor mutant* Traffic, **14**, 585–598
- Ding, Q.**, Gros, R., Chorazyczewski, J., Ferguson, S.S.G. and Feldman, R.D. (2005) *Isoform-specific regulation of adenylyl cyclase function by disruption of membrane trafficking* Mol. Pharmacol., **67**, 564-571
- Ding, W.**, Albrecht, B., Luo, R., Zhang, W., Stanley, J.R.L., Newbound, G.C. and Lairmore, M.D. (2001) *Endoplasmic reticulum and cis-Golgi localization of human T-lymphotropic virus type 1 p12¹: association with calreticulin and calnexin* J. Virol., **75**, 7672-7682
- Ding, W.-G.**, Xie, Y., Toyoda, F. and Matsuura, H. (2014) *Improved functional expression of human cardiac Kv1.5 channels and trafficking-defective mutants by low temperature treatment.* PLoS One **9**: e92923
- Drummer, H.E.**, Maerz, A. and Pountourios, P. (2003) *Cell surface expression of functional hepatitis C virus E1 and E2 glycoproteins* FEBS Lett., **546**, 385-390
- Duvernay, M.T.**, Dong, C., Zhang, X., Robitaille, M., Hébert, T.E. and Wu, G. (2009) *A single conserved leucine residue on the first intracellular loop regulates ER export of G protein-coupled receptors* Traffic, **10**, 552–566
- Eisses, J.F.**, Chi, Y. and Kaplan, J.H. (2005) *Stable plasma membrane levels of hCTRI mediate cellular copper uptake* J. Biol. Chem., **280**, 9635-9639
- Finzi, A.**, Orthwein, A., Mercier, J. and Cohen, E.A. (2007) *Productive human immunodeficiency virus type 1 assembly takes place at the plasma membrane* J. Virol., **81**, 7476-7490
- Finzi, A.**, Perlman, M., Bourgeois-Daigneault, M.-C., Thibodeau, J. and Cohen, E.A. (2013) *Major histocompatibility complex class-II molecules promote targeting of human immunodeficiency virus type 1 virions in late endosomes by enhancing internalization of nascent particles from the plasma membrane* Cell. Microbiol., **15**, 809–822
- Fukumori, A.**, Okochi, M., Tagami, S., Jiang, J., Itoh, N., Nakayama, T., Yanagida, K., Ishizuka-Katsura, Y., Morihara, T., Kamino, K., Tanaka, T., Kudo, T., Tanii, H., Ikuta, A., Haass, C. and Takeda, M. (2006)

- Presenilin-dependent γ -secretase on plasma membrane and endosomes is functionally distinct* Biochemistry, **45**, 4907-4914
- Fumagalli, F.**, Noack, J., Bergmann, T.J., Cebollero, E., Brambilla Pisoni, G., Fasana, E., Fregno, I. Galli, C., Loi, M. et al (2016) *Translocon component Sec62 acts in endoplasmic reticulum turnover during stress recovery* Nat. Cell Biol., **18**, 1173-1184
- Gallagher, A.R.**, Obermüller, N., Cedzich, A., Gretz, N. and Witzgall, R. (2000) *An ever-expanding story of cyst formation* Cell Tissue Res., **300**, 361-371
- Gilady, S.Y.**, Bui, M., Lynes, E.M., Benson, M.D., Watts, R., Vance, J.E. and Simmen, T. (2010) *Ero1a requires oxidizing and normoxic conditions to localize to the mitochondria-associated membrane (MAM)* Cell Stress Chaperones, **15**, 619–629
- Gu, Y.**, Chen, F., Sanjo, N., Kawarai, T., Hasegawa, H., Duthie, M., Li, W., Ruan, X., Luthra, A., Mount, H.T.J., Tandon, A., Fraser, P.E. and St George Hyslop, P. (2003) *APH-1 Interacts with mature and immature forms of presenilins and nicastrin and may play a role in maturation of presenilin-nicastrin complexes* J. Biol. Chem., **278**, 7374-7380
- Gustafsen, C.**, Glerup, S., Pallesen, L.T., Olsen, D., Andersen, O.M., Nykjær, A., Madsen, P. and Petersen, C.M. (2013) *Sortilin and SorLA display distinct roles in processing and trafficking of amyloid precursor protein* J. Neurosci., **33**, 64–71
- Haffner, C.**, Dettmer, U., Weller, T. and Haass, C. (2007) *The nicastrin-like protein nicalin regulates assembly and stability of the nicalin-nodal modulator (NOMO) membrane protein complex* J. Biol. Chem., **282**, 10632-10638
- Hasegawa, H.**, Sanjo, N., Chen, F., Gu, Y.-J., Shier, C., Petit, A., Kawarai, T., Katayama, T., Schmidt, S.D., Mathews, P.M., Schmitt-Ulms, G., Fraser, P.E. and St George-Hyslop, P. (2004) *Both the sequence and length of the C terminus of PEN-2 are critical for intermolecular interactions and function of presenilin complexes* J. Biol. Chem., **279**, 46455-46463
- Iavarone, C.**, Ramsauer, K., Kubarenko, A.V., Debasitis, J.C., Leykin, I., Weber, A.N.R., Siggs, O.M., Beutler, B. et al (2011) *A point mutation in the amino terminus of TLR7 abolishes signaling without affecting ligand binding* J. Immunol., **186**, 4213–4222
- Joyal, J.-S.**, Nim, S., Zhu, T., Sitaras, N. et al (2014) *Subcellular localization of coagulation factor II receptor-like 1 in neurons governs angiogenesis* Nature Med., **20**, 1165-1173
- Kim, J.**, Noh, S.H., Piao, H., Kim, D.H., Kim, K., Cha, J.S., Chung, W.Y., Cho, H.-S., Kim, J.Y. and Lee, M.G. (2016) *Monomerization and ER relocation of GRASP is a requisite for unconventional secretion of CFTR* Traffic, **17**, 733–753
- Kim, Y.-S.**, Zhuang, H., Koehler, R.C. and Dore, S. (2005) *Distinct protective mechanisms of HO-1 and HO-2 against hydroperoxide-induced cytotoxicity* Free Radical Biol. Med., **38**, 85-92
- Kume, H.**, Murayama, K.S. and Araki, W. (2009) *The two-hydrophobic domain tertiary structure of reticulon proteins is critical for modulation of β -secretase BACE1* J. Neurosci. Res., **87**, 2963-2972
- Larsen, J.V.**, Hansen, M., Møller, B., Madsen, P., Scheller, J., Nielsen, M. and Petersen, C.M. (2010) *Sortilin facilitates signaling of ciliary neurotrophic factor and related helical type 1 cytokines targeting the gp130/leukemia inhibitory factor receptor β heterodimer* Mol. Cell. Biol., **17**, 4175-4187
- Larsen, J.V.** and Petersen, C.M. (2017) *SorLA in interleukin-6 signaling and turnover* Mol. Cell. Biol., **37**: e00641-16
- Lee, S.M.**, Olzmann, J.A., Chin, L.-S. and Li, L. (2011) *Mutations associated with Charcot–Marie–Tooth disease cause SIMPLE protein mislocalization and degradation by the proteasome and aggresome–autophagy pathways* J. Cell Sci., **124**, 3319–3331
- Lefterov, I.M.**, Koldamova, R.P. and Lazo, J.S. (2000) *Human bleomycin hydrolase regulates the secretion of amyloid precursor protein* FASEB J., **14**, 1837-1847
- Li, P.**, Ninomiya, H., Kurata, Y., Kato, M., Miake, J., Yamamoto, Y., Igawa, O., Nakai, A. et al (2011) *Reciprocal control of hERG stability by Hsp70 and Hsc70 with implication for restoration of LQT2 mutant stability* Circ. Res., **108**, 458-468
- Lim, P.J.**, Danner, R., Liang, J., Doong, H., Harman, C., Srinivasan, D., Rothenberg, C., Wang, H., Ye, Y., Fang, S. and Monteiro, M.J. (2009) *Ubiquilin and p97/VCP bind erasin, forming a complex involved in ERAD* J. Cell Biol., **187**, 201–217
- Lu, S.H.-J.**, Jeon, A.H.W., Schmitt-Ulms, G., Qamar, S., Dodd, R., McDonald, B., Li, Y., Meadows, W. et al (2012) *Vigilin interacts with signal peptide peptidase* Proteome Sci., **10**:33
- Lu, M.-Y.** and Liao, F. (2011) *Interferon-stimulated gene ISG12b2 is localized to the inner mitochondrial membrane and mediates virus-induced cell death* Cell Death Differ., **18**, 925–936
- Luk, W.K.W.**, Chen, V.P., Choi, R.C.Y. and Tsim, K.W.K. (2012) *N-linked glycosylation of dimeric acetylcholinesterase in erythrocytes is essential for enzyme maturation and membrane targeting* FEBS J., **279**, 3229–3239

- Miyazaki, T.**, Neff, L., Tanaka, S., Horne, W.C. and Baron, R. (2003) *Regulation of cytochrome c oxidase activity by c-Src in osteoclasts* J. Cell Biol., **160**, 709-718
- Ng, K-E.**, Schwarzer, S., Duchon, M.R. and Tinker, A. (2010) *The intracellular localization and function of the ATP-sensitive K⁺ channel subunit Kir6.1* J. Membr. Biol., **234**, 137-147
- Okamoto, Y.**, Bernstein, J.D. and Shikano, S. (2013) *Role of C-terminal membrane-proximal basic residues in cell surface trafficking of HIV coreceptor GPR15 protein* J. Biol. Chem., **288**, 9189-9199
- Papadakis, M.**, Hawkins, L.M. and Stephenson, F.A. (2004) *Appropriate NR1-NR1 disulfide-linked homodimer formation is requisite for efficient expression of functional, cell surface N-methyl-D-aspartate NR1/NR2 receptors* J. Biol. Chem., **279**, 14703-14712
- Pourcelot, M.**, Zemirli, N., Da Costa, L.S., Loyant, R., Garcin, D., Vitour, D., Munitic, I., Vazquez, A. and Arnoult, D. (2016) *The Golgi apparatus acts as a platform for TBK1 activation after viral RNA sensing* BMC Biol., **14**: 69
- Reynard, O.**, Borowiak, M., Volchkova, V.A., Delpeut, S., Mateo, M. and Volchkov, V.E. (2009) *Ebola virus glycoprotein GP masks both its own epitopes and the presence of cellular surface proteins* J. Virol., **83**, 9596-9601
- Reynard, O.**, Nemirov, K., Page, A., Mateo, M., Raoul, H., Weissenhorn, W. and Volchkov, V.E. (2011) *Conserved proline-rich region of Ebola virus matrix protein VP40 is essential for plasma membrane targeting and virus-like particle release* J. Infect. Dis., **204**, S884-S891
- Sánchez-Sánchez, F.**, Martínez-Redondo, F., Aroca-Aguilar, J.D., Coca-Prados, M. and Escribano, J. (2007) *Characterization of the intracellular proteolytic cleavage of myocilin and identification of calpain II as a myocilin-processing protease* J. Biol. Chem., **282**, 27810-27824
- Santiago, F.W.**, Covalada, L.M., Sanchez-Aparicio, M.T., Silvas, J.A., Diaz-Vizarreta, A.C., Patel, J.R., Popov, V., Yu, X-j., Garcia-Sastre, A. and Aguilara, P.V. (2014) *Hijacking of RIG-I signaling proteins into virus-induced cytoplasmic structures correlates with the inhibition of type I interferon responses* J. Virol., **88**, 4572-4585
- Shi, Q.**, Prior, M., He, W., Tang, X., Hu, X. and Yan, R. (2009) *Reduced amyloid deposition in mice overexpressing RTN3 is adversely affected by preformed dystrophic neurites* J. Neurosci., **29**, 9163-9173
- Simonova, M.**, Wall, A., Weissleder, R. and Bogdanov, A. (2000) *Tyrosine mutants are capable of prodrug activation in transfected nonmelanotic cells* Cancer Res., **60**, 6656-6662
- Spoerri, L.**, Vella, L.J., Pham, C.L.L., Barnham, K.J. and Cappai, R. (2012) *The amyloid precursor protein copper binding domain histidine residues 149 and 151 mediate APP stability and metabolism* J. Biol. Chem., **287**, 26840-26853
- Stendel, C.**, Roos, A., Kleine, H., Arnaud, E., Özçelik, M., Sidiropoulos, P.N.M., Zenker, J., Schüpfer, F., Lehmann, U., Sobota, R.M., Litchfield, D.W., Lüscher, B., Chrast, R., Suter, U. and Senderek, J. (2010) *SH3TC2, a protein mutant in Charcot-Marie-Tooth neuropathy, links peripheral nerve myelination to endosomal recycling* Brain, **133**, 2462-2474
- Tanahashi, H.** and Tabira, T. (2007) *A novel beta-site amyloid precursor protein cleaving enzyme (BACE) isoform regulated by nonsense-mediated mRNA decay and proteasome-dependent degradation* Neurosci. Lett., **428**, 103-108
- Torsvik, J.**, Johansson, B.B., Dalva, M., Marie, M., Fjeld, K., Johansson, S., Bjørkøy, G., Saraste, J., Njølstad, P.R. and Molven, A. (2014) *Endocytosis of secreted carboxyl ester lipase in a syndrome of diabetes and pancreatic exocrine dysfunction* J. Biol. Chem., **289**, 29097-29111
- Wagner, T.**, Dieckmann, M., Jaeger, S., eggen, S. and Pietrzika, C.U. (2013) *Stx5 is a novel interactor of VLDL-R to affect its intracellular trafficking and processing* Exp. Cell Res., **319**, 1956-1972
- Wang, J.**, Brunkan, A.L., Hecimovic, S., Walker, E. and Goate, A. (2004) *Conserved "PAL" sequence in presenilins is essential for γ -secretase activity, but not required for formation or stabilization of γ -secretase complexes* Neurobiol. Dis., **15**, 654-666
- Wilson, S.J.**, Cavanagh, C.C., Leshner, A.M., Frey, A.J., Russell, S.E. and Smyth, E.M. (2009) *Activation-dependent stabilization of the human thromboxane receptor: role of reactive oxygen species* J. Lipid Res. **50**, 1047-1056
- Yang, D-S.**, Tandon, A., Chen, F., Yu, G., Yu, H., Arawaki, S., Hasegawa, H., Duthie, M. et al (2002) *Mature glycosylation and trafficking of nicastrin modulate its binding to presenilins* J. Biol. Chem., **277**, 28135-28142
- Yu, G.**, Chen, F., Nishimura, M., Steiner, H., Tandon, A., Kawarai, T., Arawaka, S., Supala, A. et al (2000) *Mutation of conserved aspartates affect maturation of presenilin 1 and presenilin 2 complexes* Acta Neurol. Scand., Suppl. **176**, 6-11
- Yu, G.**, Chen, F., Nishimura, M., Steiner, H., Tandon, A., Kawarai, T., Arakawa, S., Supala, A. et al (2000) *Mutation of conserved aspartates affects maturation of both aspartate mutant and endogenous presenilin 1 and presenilin 2 complexes* J. Biol. Chem., **275**, 27348-27353

- Yu, G.**, Chen, F., Nishimura, M., Steiner, H., Tandon, A., Kawarai, T., Arawaka, S., Supala, A. et al (2009) *UBXD4, a UBX-containing protein, regulates the cell surface number and stability of α 3-containing nicotinic acetylcholine receptors* J. Neurosci., **29**, 6883–6896
- Zhang, J.**, Kang, D.E., Xia, W., Okochi, M., Mori, H., Selkoe, D.J. and Koo, E.H. (1998) *Subcellular distribution and turnover of presenilins in transfected cells* J. Biol. Chem., **273**, 12436-12442
- Zhu, L.**, Wang, L., Luo, X., Zhang, Y., Ding, Q., Jiang, X., Wang, X., Pan, Y. and Chen, Y. (2012) *Tollip, an intracellular trafficking protein, is a novel modulator of the transforming growth factor- β signaling pathway* J. Biol. Chem., **287**, 39653–39663

6a-17. Hepatocytes

- Boson, B.**, Grano, O., Bartenschlager, R., Cosset, F-L. (2011) *A concerted action of hepatitis C virus P7 and nonstructural protein 2 regulates core localization at the endoplasmic reticulum and virus assembly* PLoS Pathog., **7**: e1002144
- Buqué, X.**, Cano, A., Miquilena-Colina, M.E., García-Monzón, C., Ochoa, B. and Aspichueta, P. (2012) *High insulin levels are required for FAT/CD36 plasma membrane translocation and enhanced fatty acid uptake in obese Zucker rat hepatocytes* Am. J. Physiol. Endocrinol. Metab., **303**, E504–E514
- Majeau, N.**, Fromentin, R., Savard, C., Duval, M., Tremblay, M.J. and Leclerc, D. (2009) *Palmitoylation of hepatitis C virus core protein is important for virion production* J. Biol. Chem., **284**, 33915–33925
- Nagata, J.**, Guerra, M.T., Shugrue, C.A., Gomes, D.A., Nagata, N. and Nathanson, M.H. (2007) *Lipid rafts establish calcium waves in hepatocytes* Gastroenterology, **133**, 256-267

6a-18. Hepatoma/hepatocarcinoma cells

- Barthel, S.R.**, Medvedev, R., Heinrich, T., Buchner, S.M., Ketter, N. and Hildt, E. (2016) *Hepatitis B virus inhibits insulin receptor signaling and impairs liver regeneration via intracellular retention of the insulin receptor* Cell. Mol. Life Sci., **73**, 4121–4140
- Camarota, L.M.**, Chapman, J.M., Hui, D.Y. and Howles, P.N. (2004) *Carboxyl ester lipase cofractionates with scavenger receptor BI in hepatocyte lipid rafts and enhances selective uptake and hydrolysis of cholesteryl esters from HDL₃* J. Biol. Chem., **279**, 27599-27606
- Christova, T.** and Templeton, D.M. (2007) *Effect of hypoxia on the binding and subcellular distribution of iron regulatory proteins* Mol. Cell. Biochem., **301**, 21-32
- De Wispeleere, M.** and Yang, P.L. (2012) *Mutagenesis of the DI/DIII linker in Dengue virus envelope protein impairs viral particle assembly* J. Virol., **86**, 7072-7083
- Garbarino, J.**, Pan, M., Chin, H.F., Lund, F.W., Maxfield, F.R. and Breslow, J.L. (2012) *STARD4 knockdown in HepG2 cells disrupts cholesterol trafficking associated with the plasma membrane, ER, and ERC* J. Lipid Res., **53**, 2716–2725
- Küch, E-M.**, Vellaramkalayil, V., Zhang, I., Lehnen, D., Brügger, B., Stremmel, W., Eehalt, R., Poppelreuther, M. and Füllekrug, J. (2014) *Differentially localized acyl-CoA synthetase 4 isoenzymes mediate the metabolic channeling of fatty acids towards phosphatidylinositol* Biochim. Biophys. Acta, **1841**, 227–239
- Lin, C-C.**, Tsai, P., Sun, H-Y., Hsu, M-C., Lee, J-C., Wu, I-C., Tsao, C-W., Chang, T-T. and Young, K-C. (2014) *Apolipoprotein J, a glucose-upregulated molecular chaperone, stabilizes core and NS5A to promote infectious hepatitis C virus virion production* J. Hepatol., **61**, 984–993
- Manna, D.**, Aligo, J., Xu, C., Park, W.S., Koc, H., Heo, W.D. and Konan, K.V. (2010) *Endocytic Rab proteins are required for hepatitis C virus replication complex formation* Virology **398**, 21–37
- Masaki, T.**, Suzuki, R., Murakami, K., Aiziki, H., Ishii, K., Murayama, A., Date, T., Matsuura, Y., Miyamura, T., Wakita, T. and Suzuki, T. (2008) *Interaction of hepatitis C virus nonstructural protein 5A with core protein is critical for the production of infectious virus particles* J. Virol., **82**, 7964-7976
- Masaki, T.**, Matsunaga, S., Takahashi, H., Nakashima, K., Kimura, Y., Ito, M., Matsuda, M. et al (2014) *Involvement of hepatitis C virus NS5A hyperphosphorylation mediated by casein kinase I- α in infectious virus production* J. Virol., **88**, 7541–7555
- Massarweh, A.**, Bosco, M., Iatmanen-Harbi, S., Tessier, C., Amana, L., Busca, P., Chantret, I., Gravier-Pelletier, C. and Moore, S.E.H. (2016) *Brefeldin A promotes the appearance of oligosaccharyl phosphates derived from Glc3Man9GlcNAc2-PP-dolichol within the endomembrane system of HepG2 cells* J. Lipid Res., **57**, 1477–1491
- Nonaka, M.**, Ma, B.Y., Ohtani, M., Yamamoto, A., Murata, M., Totani, K., Ito, Y. et al (2007) *Subcellular localization and physiological significance of intracellular mannan-binding protein* J. Biol. Chem., **282**, 17908-17920
- Roth, J.**, Yam, G.H-F., Fan, J., Hirano, K., Gaplovska-Kysela, K., Le Fourn, V., Guhl, B., Santimaria, R., Torossi, T., Ziak, M. and Zuber, C. (2008) *Protein quality control: the who's who, the where's and therapeutic escapes* Histochem. Cell Biol., **129**, 163-177

- Schaub, B.E.**, Berger, B., Berger, E.G. and Rohrer, J. (2006) *Transition of galactosyltransferase 1 from trans-Golgi cisterna to the trans-Golgi network is signal mediated* Mol. Biol. Cell, **17**, 5153-5162
- Schaub, B.E.**, Berger, B., Berger, E. and Rohrer, J. (2006) *Transition of galactosyltransferase 1 from trans-Golgi cisterna to the trans-Golgi network (and back) is signal mediated* Mol. Biol. Cell, **17** (Suppl), abstr. 1814
- Smith, S.E.**, Granell, S., Salcedo-Sicilia, L., Baldini, G., Egea, G., Teckman, J.H. and Baldini, G. (2011) *Activating transcription factor 6 limits intracellular accumulation of mutant α 1-antitrypsin Z and mitochondrial damage in hepatoma cells* J. Biol. Chem., **286**, 41563–41577
- Stone, M.**, Jia, S., Heo, W.D., Meyer, T. and Konan, K.V. (2007) *Participation of Rab5, an early endosomes protein, in hepatitis C virus RNA replication machinery* J. Virol., **81**, 4551-4563
- Tzatsos, A.** (2009) *Raptor binds the SAIN (Shc and IRS-1 NPXY binding) domain of insulin receptor substrate-1 (IRS-1) and regulates the phosphorylation of IRS-1 at Ser-636/639 by mTOR* J. Biol. Chem., **284**, 22525–22534
- Wang, Y.**, Lam, W., Chen, S-R., Guan, F-L., Dutchman, G.E., Francis, S., Baker, D.C. and Cheng, Y-C. (2016) *Tylophorine analog DCB-3503 inhibited cyclin D1 translation through allosteric regulation of heat shock cognate protein 70* Sci. Rep., **6**: 32832
- Wang, Y.**, Lee, S., Ha, Y., Lam, W., Chen, S-R., Dutschman, G., Gullen, E.A., Grill, S.P., Cheng, Y. et al (2017) *Tylophorine analogs allosterically regulates heat shock cognate protein 70 and inhibits hepatitis C virus replication* Sci. Rep., **7**: 10037
- Wu, M-J.**, Ke, P-Y., and Horng, J-T. (2014) *RacGTPase-activating protein 1 interacts with hepatitis C virus polymerase NS5B to regulate viral replication* Biochem. Biophys. Res. Comm., **454**, 19–24
- Yanatori, I.**, Yasui, Y., Noguchi, Y. and Kishi, F. (2015) *Inhibition of iron uptake by ferristatin II is exerted through internalization of DMT1 at the plasma membrane* Cell. Biol. Int., **39**, 427–434
- Zuber, C.**, Cormier, J.H., Guhl, B., Santimaria, R., Hebert, D.N. and Roth, J. (2007) *EDEM1 reveals a quality control vesicular transport pathway out of the endoplasmic reticulum not involving the COPII exit sites* Proc. Natl. Acad. Sci. USA, **104**, 4407-4412

6a-19. Hep-2 epithelial cells

- Olson, R.M.** and Anderson, D.M. (2017) *Fractionation techniques to examine effector translocation* In Type 3 Secretion Systems: Methods and Protocols, Methods Mol. Biol., **1531**, (ed. Nilles, M.L. and Jessen Condry) Springer Science+Business Media, New York, pp 101-109
- Yanatori, I.**, Richardson, D.R., Toyokuni, S. and Kishi, F. (2017) *The iron chaperone poly(rC)-binding protein 2 forms a metabolon with the heme oxygenase 1/cytochrome P450 reductase complex for heme catabolism and iron transfer* J. Biol. Chem., **292** 13205–13229

6a-20. HL60 cells

- Bach, J-P.**, Borta, H., Ackermann, W., Faust, F., Borchers, O. and Schrader, M. (2006) *The secretory granule protein syncollin localizes to HL-60 cells and neutrophils* J. Histochem. Cytochem., **54**, 877-888

6a-21. Human fibroblasts (incl. lung fibroblasts)

- Beltran, P.M.J.**, Mathias, R.A. and Cristea, I.M. (2016) *A portrait of the human organelle proteome in space and time during cytomegalovirus infection* Cell Systems **3**, 361–373
- Gorur, A.**, Yuan, L., Kenny, S.J., Baba, S., Xu, K. and Schekman, R. (2017) *COP II-coated membranes function as transport carriers of intracellular procollagen I* J. Cell Biol., **216**, 1745–1759
- Liao, G.**, Ma, X. and Liu, G. (2011) *An RNA-zipcode-independent mechanism that localizes Dial mRNA to the perinuclear ER through interactions between Dial nascent peptide and Rho-GTP* J. Cell Sci., **124**, 589-599
- Lin, H.**, Sugimoto, Y., Ohsaki, Y., Ninomiya, H., Oka, A., Taniguchi, M., Ida, H., Eto, Y., Ogawa, S., Matsuzaki, Y. et al (2004) *N-octyl- β -valienamine up-regulates activity of F213I mutant β -glucosidase in cultured cells: a potential chemical chaperone therapy for Gaucher disease* Biochim. Biophys. Acta, **1689**, 219-228
- Ohsaki, Y.**, Sugimoto, Y., Suzuki, M., Hosokawa, H., Yoshimori, T., Davies, J.P., Ioannou, Y.A., Vanier, M.T., Ohno, K. and Ninomiya, H. (2006) *Cholesterol depletion facilitates ubiquitylation of NPC1 and its association with SKD1/Vps4* J. Cell Sci., **119**, 2643-2653
- Seo, J-Y.** and Britt, W.J. (2006) *Sequence requirements for localization of human cytomegalovirus tegument protein pp28 to the virus assembly compartment and for assembly of infectious virus* J. Virol., **80**, 5611-5626
- Seo, J-Y.** and Britt, W.J. (2008) *Multimerization of tegument protein pp28 within the assembly compartment is required for cytoplasmic envelopment of human cytomegalovirus* J. Virol., **82**, 6272-6287
- Wang, H.** and Stefanovic, B. (2014) *Role of LARP6 and nonmuscle myosin in partitioning of collagen mRNAs to the ER membrane* PLoS One, **9**: e108870
- Willett, M.**, Brocard, M., Davide, A. and Morley, S.J. (2011) *Translation initiation factors and active sites of protein synthesis co-localize at the leading edge of migrating fibroblasts* Biochem. J., **438**, 217–227

6a-22. Human melanocytes

Elassiuty, Y.E., Klarquist, J., Speiser, J., Yousef, R.M., 3, El Refaie, A.A., Hunter, N.S., Shaker, O.G., Gundeti, M., Nieuweboer-Krobotova, L. and Le Poole, I.C. (2011) *Heme oxygenase-1 expression protects melanocytes from stress-induced cell death: implications for vitiligo* Exp. Dermatol., **20**, 496–501

6a-23. Human ocular cells (incl. trabecular meshwork cells)

Jia, L-Y., Gong, B., Pang, C-P., Huang, Y., Lam, D.S-C., Wang, N. Yam, G.H-F. (2009) *Correction of the disease phenotype of myocilin-causing glaucoma by a natural osmolyte* Invest. Ophthalmol. Vis. Sci., **50**, 3743–3749

Park, B-C., Shen, X., Samaraweera, M. and Yue, B.Y.J.T. (2006) *Studies of optineurin, a glaucoma gene: Golgi fragmentation and cell death from overexpression of wild-type and mutant optineurin in two ocular cell types* Am. J. Pathol., **169**, 1976-1989

Sakai, H., Shen, X., Koga, T., Park, B-C., Noskina, Y., Tibudan, M. and Yue, B.Y.J.T. (2007) *Mitochondrial association of myocilin, product of a glaucoma gene, in human trabecular meshwork cells* J. Cell. Physiol., **213**, 775-784

Wentz-Hunter, K., Ueda, J., Shimuzi, N. and Yue, B.Y.J.T. (2002) *Myocilin is associated with mitochondria in human trabecular meshwork cells* J. Cell. Physiol., **190**, 46-53

Wentz-Hunter, K., Shen, X. and Yue, B.Y.J. (2003) *Distribution of myocilin, a glaucoma gene product, in human corneal fibroblasts* Mol. Vision., **9**, 308-314

6a-24. Jurkat cells

Finetti, F., Patrussi, L., Masi, G., Onnis, A., Galgano, D., Lucherini, O.M., Pazour, G.J. and Baldari, C.T. (2014) *Specific recycling receptors are targeted to the immune synapse by the intraflagellar transport system* J. Cell Sci., **127**, 1924–1937

6a-25. Kidney cells (see also HEK cells)

6a-25-1. Collecting duct cells

Procino, G., Barbieri, C., Carmosino, M., Rizzo, F., Valenti, G. and Svelto, M. (2010) *Lovastatin-induced cholesterol depletion affects both apical sorting and endocytosis of aquaporin-2 in renal cells* Am. J. Physiol. Renal Physiol., **298**, F266–F278

6a-25-2. MDCK cells

Bahloul, A., Simmler, M-C., Michel, V., Leibovici, M., Perfeettini, I., Roux, I., Weil, D., Nouaille, S. et al (2009) *Vezatin, an integral membrane protein of adherens junctions, is required for the sound resilience of cochlear hair cells* EMBO Mol. Med., **1**, 125-138

Bakrač, B., Kladnik, A., Maček, P., McHaffie, G., Werner, A., Lakey, J.H. and Anderluh, G. (2010) *A toxin-based probe reveals cytoplasmic exposure of Golgi sphingomyelin* J. Biol. Chem., **285**, 22186–22195

Bivona, T.G., Wiener, H.H., Ahearn, I.M., Siletti, J., Chiu, V.K. and Philips, M.R. (2004) *Rap1 up-regulation and activation on plasma membrane regulates T cell adhesion* J. Cell Biol., **164**, 461-470

Cao, Z., Li, C., Higginbotham, J.N., Franklin, J.L., Tabb, D.L., Graves-Deal, R., Hill, S., Cheek, K. et al (2008) *Use of fluorescence-activated vesicle sorting for isolation of Naked2-associated, basolaterally targeted exocytic vesicles for proteomics analysis* Mol. Cell. Proteomics, **7**, 1651-1667

Guo, X., Mattered, R., Ren, X., Chen, Y., Retamal, C., González, A. and Bonifacino, J.S. (2013) *The adaptor protein-1 μ B subunit expands the repertoire of basolateral sorting signal recognition in epithelial cells* Dev. Cell, **27**, 353–366

Li, C., Hao, M., Cao, Z., Ding, W., Graves-Deal, R., Hu, J., Piston, D.W. and Coffey, R.J. (2007) *Naked2 acts as a cargo recognition and targeting protein to ensure proper delivery and fusion of TGF- α -containing exocytic vesicles at the lower lateral membrane of polarized MDCK cells* Mol. Biol. Cell, **18**, 3081-3093

Liu, F., Jia, L., Thompson-Baine, A-M., Puglise, J.M., ter Beest, M.B.A. and Zegers, M.M.P. (2010) *Cadherins and Pak1 control contact inhibition of proliferation by Pak1- β PIX-GIT complex-dependent regulation of cell-matrix signaling* Mol. Cell. Biol., **30**, 1971-1983

Michaelson, D. and Philips, M. (2006) *The use of GFP to localize Rho GTPases in living cells* Methods Enzymol., **406**, 296-315

Sabo, S.L., Lanier, L.M., Ikin, A.F., Khorkova, O., Sahasrabudhe, S., Greengard, P. and Buxbaum, J.D. (1999) *Regulation of β -amyloid secretion by FE65, an amyloid protein precursor-binding protein* J. Biol. Chem., **274**, 7952-7957 (1999)

Tokuo, H. and Coluccio, L.M. (2013) *Myosin-1c regulates the dynamic stability of E-cadherin-based cell-cell contacts in polarized Madin-Darby canine kidney cells* Mol. Biol. Cell, **24**, 2820-2833

6a-25-3. Monkey kidney

De Wilde, A.H., Li, Y., van der Meer, Y., Vuagniaux, G., Lysek, R., Fang, Y., Snijder, E.J. and van Hemerta, M.J. (2013) *Cyclophilin inhibitors block arterivirus replication by interfering with viral RNA synthesis* J. Virol., **87**, 1454-1464

Dunphy, J.T., Schroeder, H., Leventis, R., Greentree, W., Knudsen, J.K., Silvius, J.R. and Linder, M.E. (2000) *Differential effects of acyl-CoA binding protein on enzymatic and non-enzymatic thioacylation of protein and peptide substrates* Biochim. Biophys. Acta, **1485**, 185-198

Majoul, I.V., Bastiaens, P.I.H. and Soling H-D (1996) *Transport of an external Lys-Asp-Glu-Leu (KDEL) protein from the plasma membrane to the endoplasmic reticulum: studies with cholera toxin in Vero cells* J. Cell Biol., **133**, 777-789

Majoul, I., Ferrari, D. and Soling, H-D. (1997) *Reduction of protein disulfide bonds in an oxidizing environment* FEBS Lett., **401**, 104-108

McKenzie, J., Johannes, L., Taguchi, T. and Sheff, D. (2009) *Passage through the Golgi is necessary for Shiga toxin B subunit to reach the endoplasmic reticulum* FEBS J., **276**, 1581-1595

Unger, B., Mercer, J., Boyle, K.A. and Traktman, P. (2013) *Biogenesis of the vaccinia virus membrane: genetic and ultrastructural analysis of the contributions of the A14 and A17 proteins* J. Virol., **87**, 1083-1097

6a-25-4. Mouse kidney

Bui-Xuan, E-F., Li, Q., Chen, X-Z., Boucher, C.A., Sandford, R., Zhou, J., Basora, N. (2006) *More than colocalizing with polycystin-1, polycystin-1 is in the centrosome* Am. J. Physiol. Renal Physiol., **291**, F395-F406

Newby, L.J., Streets, A.J., Zhao, Y., Harris, P.C., Ward, C.J. and Ong, A.C.M. (2002) *Identification, characterization, and localization of a novel kidney polycystin-1-polycystin-2 complex* J. Biol. Chem., **277**, 20763-20773

Wu, Y., Dai, X-Q., Li, Q., Chen, C.X., Mai, W., Hussain, Z., Long, W., Montalbetti, N. et al (2006) *Kinesin-2 mediates physical and functional interactions between polycystin-2 and fibrocystin* Hum. Mol. Genet., **15**, 3280-3292

6a-25-5. NRK cells

Arasaki, K., Uemura, T., Tani, K. and Tagaya, M. (2007) *Correlation of Golgi localization of ZW10 and centrosomal accumulation of dynactin* Biochem. Biophys. Res. Commun., **359**, 811-816

6a-25-6. Porcine kidney

Choukroun, G.J., Marshansky, V., Gustafson, C.E., McKee, M., Hajjar, R.J., Rosenzweig, A., Brown, D. and Bonventre, J.V. (2000) *Cytosolic phospholipase A₂ regulates Golgi structure and modulates intracellular trafficking of membrane proteins* J. Clin. Invest., **106**, 983-993

6a-25-7. Proximal tubule cells

Merkulova, M., Hurtado-Lorenzo, A., Hosokawa, H., Zhuang, Z., Brown, D., Ausiello, D.A. and Marshansky, V. (2011) *Aldolase directly interacts with ARNO and modulates cell morphology and acidic vesicle distribution* Am. J. Physiol. Cell. Physiol., **300**, C1442-C1455

6a-26. Kidney fibroblasts

6a-26-1. BHK

Andrade, J., Zhao, H., Titus, B., Pearce, T. and Barroso, M. (2004) *EF-hand Ca²⁺-binding protein p22 plays a role in microtubule and endoplasmic reticulum organization and dynamics with distinct Ca²⁺-binding requirements* Mol. Biol. Cell, **15**, 481-496

Fontana, J., Lopez-Montero, N., Elliott, R.M., Fernandez, J.J. and Risco, C. (2008) *The unique architecture of Bunyamwera virus factories around the Golgi complex* Cell. Microbiol., **10**, 2112-2028

Frank, S., Upender, S., Hansen, S.H. and Casanova, J.E. (1998) *ARNO is a guanine nucleotide exchange factor for ADP-ribosylation factor 6* J. Biol. Chem., **273**, 23-27

Liu, H., Liu, Y., Wang, S., Zhang, Y., Zu, X., Zhou, Z., Zhang, B., Xiao, G. (2015) *Structure-based mutational analysis of several sites in the E protein: implications for understanding the entry mechanism of Japanese encephalitis virus* J. Virol., **89**, 5668-5686

Moffat, K., Knox, C., Howell, G., Clark, S.J., Yang, H., Belsham, G.J., Ryan, M. and Wileman, T. (2007) *Inhibition of the secretory pathway by foot-and-mouth disease virus 2BC protein is reproduced by co-expression of 2B with 2C and the site of inhibition is determined by the subcellular location of 2C* J. Virol., **81**, 1129-1139

6a-26-2. Human

Takeda, K., Inoue, H., Tanizawa, Y., Matsuzaki, Y., Oba, J., Watanabe, Y., Shinoda, K. and Oka, Y. (2001) *WFS1 (Wolfram syndrome 1) gene product: predominant subcellular localization to endoplasmic reticulum in cultured cells and neuronal expression in rat brain* Hum. Mol. Genet., **10**, 477-484

6a-26-3. Monkey

Pedrazzini, E., Villa, A., Longhi, R., Bulbarelli, A. and Borgese, N. (2000) *Mechanism of residence of cytochrome b(5), a tail-anchored protein, in the endoplasmic reticulum* J. Cell Biol., **148**, 899-913

Roy, M-O., Leventis, R. and Silviu, J.R. (2000) *Mutational and biochemical analysis of plasma membrane targeting mediated by the farnesylated, polybasic carboxy terminus of K-ras4B* Biochemistry, **39**, 8298-8307

6a-27. Lacrimal acinar cells

Gierow, J., Andersson, S.V. and Sjögren, E.C. (2002) *Regulated secretion and subcellular distribution of rabbit lacrimal gland alpha-fucosidases* Invest. Ophthalmol. Vis. Sci., **43**, E-Abstract 3125

6a-28. Lung fibroblast (hamster)

Li, X. and Donowitz, M. (2008) *Fractionation of subcellular membrane vesicles of epithelial and nonepithelial cells by OptiPrep™ density gradient ultracentrifugation* In Methods Mol. Biol., **440**, Exocytosis and Endocytosis (ed. Ivanov, A.I.) Humana Press, Totowa, NJ, pp 97-110

6a-29. Lymphocytic/lymphoma cells

Antberg, L., Cifani, P., Sandin, M., Levander, F. and James, P. (2012) *Critical comparison of multidimensional separation methods for increasing protein expression coverage* J. Proteome Res., **11**, 2644–2652

Hall, S.L., Hester, S., Griffin, J.L., Lilley, K.S. and Jackson, A.P. (2009) *The organelle proteome of the DT40 lymphocyte cell line* Mol. Cell. Proteom., **8**, 1295–1305

Hivroz, C., Larghi, P., Jouve, M. and Ardouin, L. (2017) *Purification of LAT-containing membranes from resting and activated T lymphocytes* In The Immune Synapse: Methods and Protocols, Methods Mol. Biol., **1584**, (ed. Baldari, C.T. and Dustin, M.L.) Springer Science+Business Media, LLC, pp 355-368

Schmidt, H., Gelhaus, C., Nebendahl, M., Lettau, M., Wartzl, C., Kabelitz, D., Leippe, M. and Janssen, O. (2008) *2-D DIGE analyses of enriched secretory lysosomes reveal heterogeneous profiles of functionally relevant proteins in leukemic and activated human NK cells* Proteomics, **8**, 2911-2925

Xiong, Q. and Rikihisa, Y. (2012) *Subversion of NPC1 pathway of cholesterol transport by Anaplasma phagocytophilum* Cell. Microbiol., **14**, 560–576

6a-30. Macrophages

Andreyev, A.Y., Shen, Z., Guan, Z., Ryan, A., Fahy, E., Subramaniam, S., Raetz, C.R.H., Briggs, S. and Dennis, E.A. (2010) *Application of proteomic marker ensembles to subcellular organelle identification* Mol. Cell. Proteomics, **9**, 388–402

Andreyev, A.Y., Fahy, E., Guan, Z., Kelly, S., Li, X., McDonald, J.G., Milne, S. et al (2010) *Subcellular organelle lipidomics in TLR-4-activated macrophages* J. Lipid Res., **51**, 2785–2797

Chakraborty, S., Srivastava, A., Jha, M.K., Nair, A., Pandey, S.P., Srivastava, N., Kumari, S., Singh, S., Krishnasastri, M.V. and Saha, B. (2015) *Inhibition of CD40-induced N-Ras activation reduces Leishmania major infection* J. Immunol., **194**, 3852–3860

Kassas, N., Tanguy, E., Thahouly, T., Fouillen, L., Heintz, D., Chasserot-Golaz, S., Bader, M-F., Grant, N.J. and Vitale, N. (2017) *Comparative characterization of phosphatidic acid sensors and their localization during frustrated phagocytosis* J. Biol. Chem., **292**, 4266–4279

Korthals, M., Langnaese, K., Smalla, K-H., Kähne, T., Herrera-Molina, R., Handschuh, J., Lehmann, A-C., Mamula, D. et al (2017) *A complex of neuroplastin and plasma membrane Ca²⁺ ATPase controls T cell activation* Sci. Rep. **7**: 8358

Sakashita, N., Chang, C.C.Y., Lei, X., Fujiwara, Y., Takeya, M. and Chang, T-Y. (2010) *Cholesterol loading in macrophages stimulates formation of ER-derived vesicles with elevated ACAT1 activity* J. Lipid Res., **51**, 1263–1272

Schaheen, B., Dang, H. and Fares, H. (2009) *Derlin-dependent accumulation of integral membrane proteins at cell surfaces* J. Cell Sci., **122**, 228-2239

Yan, W., Hwang, D. and Aebersold, R. (2008) *Quantitative proteomic analysis to profile dynamic changes in the spatial distribution of cellular proteins* In Methods Mol. Biol., **432**, Organelle Proteomics (ed. Pflieger, D. and Rossier, J.) Humana Press, Totowa, NJ, pp 389-401

Xia, W-F., Tang, F-L., Xiong, L., Xiong, S., Jung, J-U., Lee, D-H., Li, X-S., Feng, X., Mei, L. and Xiong, W-C. (2013) *Vps35 loss promotes hyperresorptive osteoclastogenesis and osteoporosis via sustained RANKL signaling* J. Cell. Biol., **200**, 821-837

6a-31 Mammary epithelial cells

Herrero, A., Casar, B., Colón-Bolea, P., gudo-Ibáñez, L. and Crespo, P. (2016) *Defined spatiotemporal features of RAS-ERK signals dictate cell fate in MCF-7 mammary epithelial cells* Mol. Biol. Cell, **27**, 1958-1968

6a-32. Mast cells

Chahdi, A., Choi, W.S., Kim, Y. M. and Beaven, M.A. (2003) *Mastoparan selectively activates phospholipase D2 in cell membranes* J. Biol. Chem., **278**, 12039-12045

6a-33. Melanoma cells

McKenzie, A.J., Hoshino, D., Hong, N.H., Cha, D.J., Franklin, J.L., Coffey, R.J., Patton, J.G. and Weaver, A.M. (2016) *KRAS-MEK signaling controls Ago2 sorting into exosomes* Cell Rep., **15**, 978–987

6a-34. Monocytic cells

Gibbins, D.J., Ciaudo, C., Erhardt, M. and Voinnet, O. (2009) *Multivesicular bodies associate with components of miRNA effector complexes and modulate miRNA activity* Nat. Cell Biol., **11**, 1143-1149
Sakashita, N., Chang, C.C.Y., Lei, X., Fujiwara, Y., Takeya, M. and Chang, T-Y. (2010) *Cholesterol loading in macrophages stimulates formation of ER-derived vesicles with elevated ACAT1 activity* J. Lipid Res., **51**, 1263–1272

6a-35. Murine fibroblasts

Dudek, E., Millott, R., Liu, W-X., Beauchamp, E., Berthiaume, L.G. and Michalak, M. (2015) *N-myristoyltransferase 1 interacts with calnexin at the endoplasmic reticulum* Biochem. Biophys. Res. Comm., **468**, 889-893
Graham, J.F., Agarwal, S., Kurian, D., Kirby, L., Pinheiro, T.J.T. and Gill, A.C. (2010) *Low density subcellular fractions enhance disease-specific prion protein misfolding* J. Biol. Chem., **285**, 9868–9880
Jung, J., Wang, J., Groenendyk, J., Lee, D., Michalak, M. and Agellon, L.B. (2017) *Fatty acid binding protein (Fabp) 5 interacts with the calnexin cytoplasmic domain at the endoplasmic reticulum* Biochem. Biophys. Res. Comm., **493**, 202-206
Khalifeh-Soltani, A., McKleroy, W., Sakuma, S., Cheung, Y.Y., 1,3, Tharp, K., Qiu, Y., Turner, S.M., Chawla, A., Stah, A. and Atabai, K. (2014) *Mfge8 promotes obesity by mediating the uptake of dietary fats and serum fatty acids* Nat. Med., **20**, 175-183
Lee, D., Kraus, A., Prins, D., Groenendyk, J., Aubry, I., Liu, W-X., Li, H-D., Julien, O. et al (2015) *UBC9-dependent association between calnexin and protein tyrosine phosphatase 1B (PTP1B) at the endoplasmic reticulum* J. Biol. Chem., **290**, 5725-5738
Pourcelot, M., Zemirli, N., Da Costa, L.S., Loyant, R., Garcin, D., Vitour, D., Munitic, I., Vazquez, A. and Arnoult, D. (2016) *The Golgi apparatus acts as a platform for TBK1 activation after viral RNA sensing* BMC Biol., **14**: 69
Takahashi, Y., Shinoda, A., Furuya, N., Harada, E., Arimura, N., Ichi, I., Fujiwara, Y., Inoue, J. and Sato, R. (2013) *Perilipin-mediated lipid droplet formation in adipocytes promotes sterol regulatory element-binding protein-1 processing and triacylglyceride accumulation* PLoS One, **8**: e64605
Tanabe, C., Maeda, T., Zou, K., Liu, J., Liu, S., Nakajima, T. and Komano, H. (2012) *The ubiquitin ligase synoviolin up-regulates amyloid β production by targeting a negative regulator of γ -secretase, Rer1, for degradation* J. Biol. Chem., **287**, 44203–44211

6a-36. Murine muscle cells

Gigel, M., Staffer, S., Eehalt, F., Stremmel, W., Eehalt, R. and Füllekrug, J. (2011) *FATP4 contributes as an enzyme to the basal and insulin mediated fatty acid uptake of C2C12 muscle cells* Am. J. Physiol. Endocrinol. Metab., **301**, E785–E796, 2011

6a-37. Myoblasts

Gracida-Jiménez, V., Mondragón-González, R., Vélez-Aguilera, G., Vásquez-Limeta, A., Laredo-Cisneros, M.S., Gómez-López, J. de-D., Vaca, L., Gourlay, S.C. et al (2017) *Retrograde trafficking of β -dystroglycan from the plasma membrane to the nucleus* Sci. Rep., **7**: 9906
Gyobu, S., Miyata, H., Ikawa, M., Yamazaki, D., Takeshima, H., Suzuki, J., Nagata, S. (2016) *A role of TMEM16E carrying a scrambling domain in sperm motility* Mol. Cell. Biol., **36**, 645-659
Mizuta, K., Tsutsumi, S., Inoue, H., Sakamoto, Y., Miyatake, K., Miyawaki, K., Noji, S., Kamata, N. and Itakura, M. (2007) *Molecular characterization of GDD1/TMEM16E, the gene product responsible for autosomal dominant gnathodiaphyseal dysplasia* Biochem. Biophys. Res. Commun., **357**, 126-132

Valkova, C., Albrizio, M., Röder, I.V., Schwake, M., Betto, R., Rudolf, R. and Kaether, C. (2011) *Sorting receptor Rer1 controls surface expression of muscle acetylcholine receptors by ER retention of unassembled α -subunits* Proc. Natl. Acad. Sci. USA, **108**, 621–625

6a-38. Neuroblastoma cells

Colla, E., Coune, P., Liu, Y., Pletnikova, O., Troncoso, J.C., Iwatsubo, T., Schneider, B.L. and Lee, M.K. (2012) *Endoplasmic reticulum stress is important for the manifestations of α -synucleinopathy in vivo* J. Neurosci., **32**, 3306–3320

Giles, L.M., Li, L. and Chin, L-S. (2009) *Printor, a novel torsinA-interacting protein implicated in dystonia pathogenesis* J. Biol. Chem., **284**, 21765–21775

Grimm, M.O.W., Kuchenbecker, J., Grösgen, S., Burg, V.K., Hundsdörfer, B., Rothhaar, T.L., Friess, P., de Wilde, M.C. et al (2011) *Docosahexaenoic acid reduces amyloid β production via multiple pleiotropic mechanisms* J. Biol. Chem., **286**, 14028–14039

Ito, D., Fujisawa, T., Iida, H. and Suzuki, N. (2008) *Characterization of seipin/BSCL2, a protein associated with spastic paraplegia 17* Neurobiol. Dis., **31** 266-277

Iwata, H., Tomita, T., Maruyama, H. and Iwatsubo, T. (2001) *Subcellular compartment and molecular subdomain of β -amyloid precursor protein relevant to the $A\beta$ 42-promoting effects of Alzheimer mutant presenilin 2* J. Biol. Chem., **276**, 21678-21685

Jung, S. (2010) *ELGA stimulates gamma-secretase activity to increase $A\beta$ generation* Alzheimers Dementia **6**, Suppl 1, S260

Kim, S.H., Lah, J.J., Thinakaran, G., Levey, A. and Sisodia S.S. (2000) *Subcellular localization of presenilins: association with a unique membrane pool in cultured cells* Neurobiol. Dis., **7**, 99-117

Leem, J.Y., Vijayan, S., Han, P., Cai, D., Machura, M., Lopes, K.O., Veselits, M.L., Xu, H. and Thinakaran, G. (2002) *Presenilin 1 is required for maturation and cell surface accumulation of nicastrin* J. Biol. Chem., **277**, 19236-19240

Omi, T., Tanimukai, H., Kanayama, D., Sakagami, Y., Tagami, S., Okochi, M., Morihara, T., Sato, M., Yanagida, K., et al (2014) *Fluvoxamine alleviates ER stress via induction of Sigma-1 receptor* Cell Death Dis., **5**: e1332

Petanceska, S., Seeger, M., Checler, F. and Gandy, S. (2000) *Mutant presenilin 1 increases the levels of Alzheimer amyloid β -peptide $A\beta$ 42 in late compartments of the constitutive secretory pathway* J. Neurochem., **74**, 1878-1884

Qin, W. and Jia, J. (2008) *Down-regulation of insulin-degrading enzyme by presenilin 1 V97L mutant potentially underlies increased levels of amyloid beta 42* Eur. J. Neurosci., **27**, 2425-2432

Shrivastava-Ranjan, P., Faundez, V., Fang, G., Rees, H., Lah, J.J., Levey, A.I. and Kahn, R.A. (2008) *Mint3/X11 γ is an ADP-ribosylation factor-dependent adaptor that regulates the traffic of the Alzheimer's precursor protein from the trans-Golgi network* Mo. Biol. Cell, **19**, 51-64

Takahashi, M., Dore, S., Ferris, C.D., Tomita, T., Sawa, A., Wolosker, H., Borchelt, D. R. et al (2000) *Amyloid precursor proteins inhibit heme oxygenase activity and augment neurotoxicity in Alzheimer's disease* Neuron, **28**, 461-473

Takasugi, N., Takahashi, Y., Morohashi, Y. and Tomita, T. (2002) *The mechanism of γ -secretase activities through high molecular weight complex formation of presenilins is conserved in Drosophila melanogaster and mammals* J. Biol. Chem., **277**, 50198-50205

Tibaldi, E., Brunati, A.M., Massimino, M.L., Stringaro, A., Colone, M., Agostinelli, E., Arancia, G. and Toninello, A. (2008) *Src-Tyrosine kinases are major agents in mitochondrial tyrosine phosphorylation* J. Cell. Biochem., **104**, 840-849

Tomita, T., Watabiki, T., Takikawa, R., Morohashi, Y., Takasugi, N., Kopan, R., de Strooper, B. and Iwatsubo, T. (2001) *The first proline of PALP motif at the C terminus of presenilins is obligatory for stabilization, complex formation, and γ -secretase activities of presenilins* J. Biol. Chem., **276**, 33273-33281

Urano, Y., Ochiai, S. and Noguchi, N. (2013) *Suppression of amyloid- β production by 24S-hydroxy-cholesterol via inhibition of intracellular amyloid precursor protein trafficking* FASEB J., **27**, 4305–4315

Wang, Y.P., Biernat, J., Pcikhardt, M., Mandelkow, E. and Mandelkow, E-M. (2007) *Stepwise proteolysis liberates tau fragments that nucleate the Alzheimer-like aggregation of full-length tau in a neuronal cell model* Proc. Natl. Acad. Sci. USA, **104**, 10252-10257

6a-39. Neuroglioma cells

Brockway, S.M., Clay, C.T., Lu, X.T. and Denison, M.R. (2003) *Characterization of the expression, intracellular localization, and replication complex association of the putative mouse hepatitis virus RNA-dependent RNA polymerase* J. Virol., **77**, 10515-10527

- Chang, Y.**, Tesco, G., Jeong, W.J., Lindsley, L., Eckman, E.A., Eckman, C.B., Tanzi, R.E. and Guenette, S.Y. (2003) *Generation of the β -amyloid peptide and the amyloid precursor protein C-terminal fragment γ are potentiated by FE65L1* J. Biol. Chem., **278**, 511000-51107
- Choi, K.S.**, Aizaki, H. and Lai, M.M. (2005) *Murine coronavirus requires lipid rafts for virus entry and cell-cell fusion but not for virus release* J. Virol., **79**, 9862-9871
- Lane, R.F.**, Steele, J.W., Cai, D., Ehrlich, M.E., Attie, A.D. and Gandy, S. (2013) *Protein sorting motifs in the cytoplasmic tail of SorCS1 control generation of Alzheimer's amyloid- β peptide* J. Neurosci., **33**, 7099-7107
- Patton, S.M.**, Pinero, D.J., Surguladze, N., Beard, J. and Connor, J.R. (2005) *Subcellular localization of iron regulatory proteins to Golgi and ER membranes* J. Cell Sci., **118**, 4365-4373
- Podyma-Inoue, K.A.**, Moriwaki, T., Rajapakshe, A.R., Terasawa, K. and Hara-Yokoyama, M. (2016) *Characterization of heparan sulfate proteoglycan-positive recycling endosomes isolated from glioma cells* Canc. Genom. Proteom., **13**, 443-452
- Richt, J.A.** and Garten, W. (2005) *Maturation of Borna virus disease virus glycoprotein* FEBS Lett., **579**, 4751-4756
- Sanjo, N.**, Katayama, T., Hasegawa, H., Jin, H., Duthie, M., Mount, H.T.J., Mizusawa, H., St George-Hyslop, P. and Fraser, P.E. (2010) *Localization and trafficking of endogenous anterior pharynx-defective 1, a component of Alzheimer's disease related γ -secretase* Neurosci. Lett., **483**, 53-56
- Sims, A.C.**, Ostermann, J. and Denison, M.R. (2000) *Mouse hepatitis virus replicase proteins associate with two distinct populations of intracellular membranes* J. Virol., **74**, 5647-5654
- Tekirian, T.L.**, Merriam, D.E., Marshansky, V., Miller, J., Crowley, A.C., Chan, H., Ausiello, D. et al (2001) *Subcellular localization of presenilin 2 endoproteolytic C-terminal fragments* Mol. Brain Res., **96**, 14-20

6a-40. Neuronal cells

- Akassoglou, K.**, Malester, B., Xu, J., Tessarollo, L., Rosenbluth, J. and Chao, M.V. (2004) *Brain-specific deletion of neurotrophin target *esterase/swisscheese* results in neurodegeneration* Proc. Natl. Acad. Sci. USA, **101**, 5075-5080
- Arévalo, J.**, Pereira, D.B., Yano, H., Teng, K.K. and Chao, M.V. (2006) *Identification of a switch in neurotrophin signaling by selective tyrosine phosphorylation* J. Biol. Chem., **281**, 1001-1007
- Arévalo, J.C.**, Wu, S.H., Takahashi, T., Zhang, H., Yu, T., Yano, H., Milner, T.A., Tessarollo, L., Ninan, I., Arancio, O. and Chao, M.V. (2010) *The ARMS/Kidins220 scaffold protein modulates synaptic transmission* Mol. Cell. Neurosci., **45**, 92-100
- Delcroix, J-D.**, Valletta, J.S., Wu, C., Hunt, S.J., Kowal, A.S. and Mobley, W.C. (2003) *NGF signaling in sensory neurons: evidence that early endosomes carry NGF retrograde signals* Neuron, **39**, 69-84
- Kamal, A.**, Almenar-Queralt, A., LeBlanc, J.F., Roberts, E.A. and Goldstein, L.S.B. (2001) *Kinesin-mediated axonal transport of a membrane compartment containing β -secretase and presenilin-1 requires APP* Nature, **414**, 643-648
- Kao, S-C.**, Krichevsky, A.M., Kosik, K.S. and Tsai, L-H. (2004) *BACE1 suppression by RNA interferences in primary cortical neurons* J. Biol. Chem., **279**, 1942-1949
- Kim, A.H.**, Yano, H., Cho, H., Meyer, D., Monks, B., Margolis, B., Birnbaum, M.J. and Chao, M.V. (2002) *Akt1 regulates a JNK scaffold during excitotoxic apoptosis* Neuron, **35**, 697-709
- Kim, Y-S.**, Zhuang, H., Koehler, R.C. and Dore, S. (2005) *Distinct protective mechanisms of HO-1 and HO-2 against hydrogen peroxide-induced cytotoxicity* Free Radical Biol. Med., **38**, 85-92
- Lee, S.M.**, Sha, D., Mohammed, A.A., Asress, S., Glass, J.D., Chin, L-S. and Li, L. (2013) *Motor and sensory neuropathy due to myelin infolding and paranodal damage in a transgenic mouse model of Charcot-Marie-Tooth disease type 1C* Hum. Mol. Genet., **22**, 1755-1770
- Lei, P.**, Ayton, S., Finkelstein, D.I., Spoerri, L., Ciccotosto, G.D., Wright, D.K., Wong, B.X.W., Adlard, P.A., Cherny, R.A., et al (2012) *Tau deficiency induces parkinsonism with dementia by impairing APP-mediated iron export* Nat. Med., **18**, 291-295
- Rezvani, K.**, Baalman, K., Teng, Y., Mee, M.P., Dawson, S.P., Wang, H., De Biasi, M. and Mayer, R.J. (2012) *Proteasomal degradation of the metabotropic glutamate receptor 1 α is mediated by Homer-3 via the proteasomal S8 ATPase* J. Neurochem. (2012) **122**, 24-37
- Schäfer, M.K.E.**, Nam, Y-C., Moumen, A., Keglöwlich, L., Bouché, E., Küffner, M., Bock, H.H., Rathjen, F.G., Raoul, C. and Frotscher, M. (2010) *L1 syndrome mutations impair neuronal L1 function at different levels by divergent mechanisms* Neurobiol. Dis., **40**, 222-237
- Won, J-S.**, Im, Y-B., Khan, M., Contreras, M., Singh, A.K. and Singh, I. (2008) *Lovastatin inhibits amyloid precursor protein (APP) β -cleavage through reduction of APP distribution in Lubrol WX extractable low density lipid rafts* J. Neurochem., **105**, 1536-1549
- Yano, H.** and Chao, M.V. (2004) *Mechanisms of neurotrophin receptor vesicular transport* J. Neurobiol., **58**, 244-257

6a-41. Osteoblasts/osteosarcoma cells

Delorme-Axford, E., Morosky, S., Bomberger, J., Stolz, D.B., Jackson, W.T. and Coyne, C.B. (2014) *BPIFB3 regulates autophagy and coxsackievirus B replication through a noncanonical pathway independent of the core initiation machinery* mBio, **5**, e02147-14

Ribe, D. and Stenbeck, G. (2010) *Modulation of intracellular trafficking by TGF β and rhoa* Bone **47**, S130-S131

6a-42. Pancreatic acinar cells

Raffaniello, R., Fedorova, D., Ip, D. and Rafiq, S. (2009) *Hsp90 co-localizes with Rab-GDI-1 and regulates agonist-induced amylase release in AR42J cells* Cell. Physiol. Biochem., **24**, 369-378

6a-43. Pancreatic islet cells

Gupta, S., McGrath, B. and Cavener, D.R. (2010) *PERK (EIF2AK3) regulates proinsulin trafficking and quality control in the secretory pathway* Diabetes, **59**, 1937-1947

6a-44. Pheochromocytoma (PC12) cells

Hasegawa, H., Zinsler, S., Rhee, Y., Vik-Mo, E.O., Davanger, S. and Hay, J.C. (2003) *Mammalian Ykt6 is a neuronal SNARE targeted to a specialized compartment by its profilin-like amino terminal domain* Mol. Biol. Cell, **14**, 698-720

Kametani, F., Usami, M., Tanaka, K., Kume, H. and Mori, H. (2004) *Mutant presenilin (A260V) affects Rab8 in PC12D cell* Neurochem. Int., **44**, 313-320

Kim, C-H., Leung, A., Huh, Y.H., Yang, E., Kim, D-J., Leblanc, P., Ryu, H. et al (2011) *Norepinephrine deficiency is caused by combined abnormal mRNA processing and defective protein trafficking of dopamine β -hydroxylase* J. Biol. Chem., **286**, 9196-9204

Li, Y., Chin, L-S., Levey, A.L. and Li, L. (2002) *Huntingtin-associated protein 1 interacts with hepatocyte growth factor-regulated tyrosine kinase substrate and functions in endosomal trafficking* J. Biol. Chem., **277**, 28212-28221

Patranabis, S. and Bhattacharyya, S.N. (2016) *Phosphorylation of Ago2 and subsequent inactivation of let-7a RNP specific microRNAs control differentiation of mammalian sympathetic neurons* Mol. Cell. Biol., **36**, 1260-1271

Pryor, S., McCaffrey, G., Young, L.R. and Grimes, M.L. (2012) *NGF causes TrkA to specifically attract microtubules to lipid rafts* PLoS One **7**: e35163

Rezvani, K., Teng, Y. and De Biasi, M. (2010) *The ubiquitin-proteasome system regulates the stability of neuronal nicotinic acetylcholine receptors* J. Mol. Neurosci., **40**, 177-184

Sannerud, R., Marie, M., Nizak, C., Dale, H.A., Pernet-Gallay, K., Perez, F., Goud, B. and Saraste, J. (2006) *Rab1 defines a novel pathway connecting the pre-Golgi intermediate compartment with the cell periphery* Mol. Biol. Cell, **17**, 1514-1526

Sannerud, R., Marie, M., Hansen, B.B. and Saraste, J. (2008) *Use of polarized PC12 cells to monitor protein localization in the early biosynthetic pathway* In Methods Mol. Biol., **457**, Membrane Trafficking (ed. Vancura, A.) Humana Press, Totowa, NJ, pp 253-265

Thayanidhi, N., Liang, Y., Hasegawa, H., Nycz, D.C., Oorschot, V., Klumperman, J. and Hay, J.C. (2012) *R-SNARE ykt6 resides in membrane-associated protease-resistant protein particles and modulates cell cycle progression when over-expressed* Biol. Cell, **104**, 397-417

Van Niel, G., Bergam, P., Di Cicco, A., Hurbain, I., Lo Cicero, A., Dingli, F., Palmulli, R., Fort, C. et al (2015) *Apolipoprotein E regulates amyloid formation within endosomes of pigment cells* Cell Rep., **13**, 43-51

Wan, J., Cheung, A.Y., Fu, W-Y., Wu, C., Zhang, M., Mobley, W.C., Cheung, Z.H. and Ip, N.Y. (2008) *Endophilin B1 as a novel regulator of nerve growth factor/ TrkA trafficking and neurite outgrowth* J. Neurosci., **28**, 9002-9012

Wu, C., Lai, C-F. and Mobley, W.C. (2001) *Nerve growth factor activates persistent Rap1 signaling in endosomes* J. Neurosci., **21**, 5406-5416

Wu, C., Ramirez, A., Cui, B., Ding, J., Delcroix, J-D.M., Valletta, J.S., Yang, Y., Chu, S. and Mobley, W.C. (2007) *A functional dynein-microtubule network is required for NGF signaling through the Rap1/MAPK pathway* Traffic, **8**, 1503-1520

Yano, H. and Chao, M.V. (2005) *Biochemical characterization of intracellular membranes bearing Trk neurotrophin receptors* Neurochem. Res., **30**, 767-777

6a-45. Platelets

Albarran, L., Berna-Erro, A., Dionisio, N., Redondo, P.C., Lopez, E., Lopez, J.J., Salido, G.M., Brull Sabate, J.M. and Rosado, J.A. (2014) *TRPC6 participates in the regulation of cytosolic basal calcium concentration in murine resting platelets* Biochim. Biophys. Acta, **1843**, 789-796

Flaumenhaft, R., Dilks, J.R., Rozenvayn, N., Monahan-Earley, R., Feng, D. and Dvorak, A.M. (2005) *The actin cytoskeleton differentially regulates platelet α -granule and dense-granule secretion* Blood, **105**, 3879-3887

6a-46. Polyoma virus producing JCI cells

Suzuki, T., Orba, Y., Okada, Y., Sunden, Y., Kimura, T., Tanaka, S., Nagashima, K., Hall, W.W. and Sawa, H. (2010) *The human polyoma JC virus agnoprotein acts as a viroporin* PLoS Pathogens, **6**: e1000801

6a-47. Prostate carcinoma cells

Thomas, J.D., Longen, C.G., Oyer, H.M., Chen, N., Maher, C.M., Salvino, J.M., Kania, B., Anderson, K.N. et al (2017) *Smad1 targeting to suppress aberrant androgen receptor signaling in prostate cancer* Cancer Res., **77**, 2439-2452

6a-48 Retinal ganglion cells

Joyal, J-S., Nim, S., Zhu, T., Sitaras, N. et al (2014) *Subcellular localization of coagulation factor II receptor-like 1 in neurons governs angiogenesis* Nature Med., **20**, 1165-1173

6a-49. Skin fibroblasts

Li, Q., Zhang, Y., Marden, J.J., Banfi, B. and Engelhardt, J.F. (2008) *Endosomal NADPH oxidase regulates c-Src activation following hypoxia/reoxygenation injury* Biochem. J., **411**, 531-541

6a-50. Stellate cells (hepatic)

Brunati, A.M., Tibaldi, E., Carraro, A., Gringeri, E., D'Amico, F., Toninello, A., Massimino, M.L., Pagano, M.A., Nalesso, G. and Cillo, U. (2008) *Cross-talk between PDGF and SIP signalling elucidates the inhibitory effect and potential antifibrotic action of the immunomodulator FTY720 in activated HSC-cultures* Biochim. Biophys. Acta **1783** 347-359

6a-51 Stem cells

Christoforou, A., Mulvey, C.M., Breckels, L.M., Geladaki, A., Hurrell, T., Hayward, P.C., Naake, T., Gatto, L., Viner, R., Arias, A.M. and Lilley, K.S. (2016) *A draft map of the mouse pluripotent stem cell spatial proteome* Nat. Comm., **7**: 8992

6a-52. Vascular smooth muscle cells

Cavet, M.E., Pang, J., Yin, G. and Berk, B.C. (2008) *An epidermal growth factor (EGF) -dependent interaction between GIT1 and sorting nexin 6 promotes degradation of the EGF receptor* FASEB J., **22**, 3607-3616

Lucero, H.A., Ravid, K., Grimsby, J.L., Rich, C.B., DiCamillo, S.J., Mäki, J.M., Myllyharju, J. and Kagan, H.M. (2008) *Lysyl oxidase oxidizes cell membrane proteins and enhances the chemotactic response of vascular smooth muscle cells* J. Biol. Chem., **283**, 24103-24117

Masori, M., Hamamoto, A., Mawatari, K., Harada, N., Takahasi, A. and Nakaya, Y. (2007) *Angiotensin II decreases glucose uptake by downregulation of GLUT1 in the cell membrane of the vascular smooth muscle cell line A10* J. Cardiovasc. Pharmacol., **50**, 267-273

6b. Mammalian tissues

6b-1. Brain

Araki, Y., Tomita, S., Yamaguchi, H., Miyagi, N., Sumioka, A., Kirino, Y. and Suzuki, T. (2003) *Novel cadherin-related membrane proteins, alcadeins, enhance the X11-like protein-mediated stabilization of amyloid β -protein precursor metabolism* J. Biol.Chem., **278**, 49448-49458

Araki, Y., Kawano, T., Taru, H., Saito, Y., Wada, S., Miyamoto, K., Kobayashi, H. et al (2007) *The novel cargo Alcadein induces vesicle association of kinesin-1 motor components and activates axonal transport* EMBO J., **26**, 1475-1486

Ballar, P., Shen, Y., Zhong, Y., Nagahama, M., Tagaya, M., Apostolou, A. and Fang, S. (2007) *SVIP interacts with Derlin1 and regulates ER-associated degradation* FASEB J., **21**, 803.3

Chakraborty, G., Saito, M., Shah, R., Mao, R-F., Vadasz, C. and Saito, M. (2012) *Ethanol triggers sphingosine 1-phosphate elevation along with neuroapoptosis in the developing mouse brain* J. Neurochem., **121**, 806-817

Chen, F., Yang, D-S., Petanceska, S., Yang, A., Tandon, A., Yu, G., Rozmahel, R., Ghiso, J., Nishimura, M., Zhang, D.M., Kawarai, T. et al P.E (2000) *Carboxyl-terminal fragments of Alzheimer β -amyloid precursor protein accumulate in restricted and unpredicted intracellular compartments in presenilin 1 deficient cells* J. Biol. Chem., **275**, 36794-36802

- Chen, F.**, Tandon, A., Sanjo, N., Gu, Y.-J., Hasegawa, H., Arawaka, S., Lee, F.J.S., Ruan, X., Mastrangelo, P. et al (2003) *Presenilin 1 and Presenilin 2 have differential effects on the stability and maturation of Nicastrin in mammalian brain* J. Biol. Chem., **278**, 19974-19979
- Fernando, R.N.**, Albiston, A.L. and Chai, S.Y. (2008) *The insulin-regulated aminopeptidase IRAP is colocalised with GLUT4 in the mouse hippocampus - potential role in modulation of glucose uptake in neurones?* Eur. J. Neurosci., **28**, 588-598
- Frykman, S.**, Hur, J.-Y., Franberg, J., Aoki, M., Winblad, B., Nahalkova, J., Behbahani, H. and Tjernberg, L.O. (2010) *Synaptic and endosomal localization of active γ -secretase in rat brain* PLoS One, **5**: e8948
- Galliciotti, G.**, Glatzel, M., Kinter, J., Kozlov, S.V., Cinelli, P., Rüllicke, T. and Sonderegger, P. (2007) *Accumulation of mutant neuroserpin precedes development of clinical symptoms in familial encephalopathy with neuroserpin inclusion bodies* Am. J. Pathol., **170**, 1305-1313
- Gandy, S.**, Zhang, Y.-w., Ikin, A., Schmidt, S.D., Levy, E., Sheffield, R., Nixon, R.A., Liao, F.-F., Mathews, P.M., Xu, H. and Ehrlich, M.E. (2007) *Alzheimer's presenilin 1 modulates sorting of APP and its carboxy-terminal fragments in cerebral neurons in vivo* J. Neurochem., **102**, 619-626
- Green, K.N.**, Khashwji, H., Estrada, T. and LaFerla, F.M. (2011) *ST101 induces a novel 17kDa APP cleavage that precludes A β generation in vivo* Ann. Neurol., **69**, 831-844
- Hryciw, T.**, MacDondald, J.I.S., Phillips, R., Seah, C., Pasternak, S. and Meakin, S. (2010) *The fibroblast growth factor receptor substrate 3 adapter is a developmentally regulated microtubule-associated protein expressed in migrating and differentiated neurons* J. Neurochem., **112**, 924-939
- Jacobs, S.B.R.**, Basak, S., Murray, J.I. and Attardi, L.D. (2007) *Siva is an apoptosis-selective p53 target gene important for neuronal cell death* Cell Death Differ., **14**, 1374-1385
- Kumada, T.**, Yamanaka, Y., Kitano, A., Shibata, M., Awaya, T., Kato, T., Okawa, K., Abe, T., Oshima, N., Nakahata, T. and Heike, T. (2010) *Tyhl, a Ca²⁺-binding protein localized to the endoplasmic reticulum, is required for early embryonic development* Dev. Dyn., **239**, 2233-2245
- Kume, H.**, Konishi, Y., Murayama, K.S., Kametani, F. and Araki, W. (2009) *Expression of reticulon 3 in Alzheimer's disease brain* Neuropathol. Appl. Neurobiol., **35**, 178-188
- Lee, M.-S.**, Kao, S.-C., Lemere, C.A., Xia, W., Tseng, H.-C., Zhou, Y., Neve, R., Ahljianian, M.K. and Tsai, L.-H. (2003) *APP processing is regulated by cytoplasmic phosphorylation* J. Cell Biol., **163**, 83-95
- Li, Q.**, Sullivan, N.R., McAllister, C.E., Van de Kar, L.D. and Muma, N. A. (2013) *Estradiol accelerates the effects of fluoxetine on serotonin 1A receptor signaling* Psychoneuroendocrinology, **38**, 1145-1157
- Liu, L.**, Watanabe, N., Akatsu, H. and Nishimura, M. (2016) *Neuronal expression of ILE1/FAM3C and its reduction in Alzheimer's disease* Neuroscience, **330**, 236-246
- Lochhead, J.J.**, McCaffrey, G., Quigley, C.E., Finch, J., DeMarco, K.M., Nametz, N. and Davis, T.P. (2010) *Oxidative stress increases blood-brain barrier permeability and induces alterations in occluding during hypoxia-reoxygenation* J. Cereb. Blood Flow Metab., **30**, 1625-1636
- MacDonald, J.I.S.**, Dietrich, A., Gamble, S., Hryciw, T., Grant, R.I. and Meakin, S. (2012) *Nesca, a novel neuronal adapter protein, links the molecular motor kinesin with the pre-synaptic membrane protein, syntaxin-1, in hippocampal neurons* J. Neurochem., **121**, 861-880
- Nahalkova, J.**, Volkmann, I., Aoki, M., Winblad, B., Bogdanovic, N., Tjernberg, L.O. and Behbahani, H. (2010) *CD147, a γ -secretase associated protein is up-regulated in Alzheimer's disease brain and its cellular trafficking is affected by presenilin-2* Neurochem. Int., **56**, 67-76
- Polyak, M.J.**, Li, H., Shariat, N. and Deans, J.P. (2008) *CD20 Homo-oligomers physically associate with the B cell antigen receptor: dissociation upon receptor engagement and recruitment of phosphoproteins and calmodulin-binding proteins* J. Biol. Chem., **283**, 18545-18552
- Rezvani, K.**, Baalman, K., Teng, Y., Mee, M.P., Dawson, S.P., Wang, H., De Biasi, M. and Mayer, R.J. (2012) *Proteasomal degradation of the metabotropic glutamate receptor 1 α is mediated by Homer-3 via the proteasomal S8 ATPase* J. Neurochem. (2012) **122**, 24-37
- Salvi, M.**, Stringaro, A., Brunati, A.M., Agostinelli, E., Arancia, G., Clari, G. and Toninello, A. (2004) *Tyrosine phosphatase activity in mitochondria: presence of Shp-2 phosphatase in mitochondria* Cell. Mol. Life Sci., **61**, 2393-2404
- Sano, Y.**, Syuzo-Takabatake, A., Nakaya, T., Saito, Y., Tomita, S., Itohara, S. and Suzuki, T. (2006) *Enhanced amyloidogenic metabolism of the amyloid β -protein precursor in the XIIL-deficient mouse brain* J. Biol. Chem., **281**, 37853-37860
- Sano, Y.**, Nakaya, T., Pedrini, S., Takeda, S., Iijima-Ando, K., Iijima, K., Mathews, P.M., Itohara, S., Gandy, S. and Suzuki, T. (2006) *Physiological mouse brain A β levels are not related to the phosphorylation state of threonine-668 of Alzheimer's APP* PLoS ONE, **1**:e51
- Schwenk, B.M.**, Lang, C.M., Hogg, S., Tahirovic, S., Orozco, D., Rentzsch, K., Lichtenthaler, S.F., Hoogenraad, C.C., Capell, A., Haass, C. and Edbauer, D. (2014) *The FTL risk factor TMEM106B and MAP6 control dendritic trafficking of lysosomes* EMBO J., **33**, 450-467

- Song, W.-J.**, Son, M.-Y., Lee, H.-W., Seo, H., Kim, J.H. and Chung, S.-H. (2015) *Enhancement of BACE1 activity by p25/Cdk5-mediated phosphorylation in Alzheimer's disease* PLoS One, **10**: e0136950
- Srinivasan, K.**, Roosa, J., Olsen, O., Lee, S.-H., Bredt, D.S. and McConnell, S.K. (2008) *MALS-3 regulates polarity and early neurogenesis in the developing cerebral cortex* Development, **135**, 1781-1790
- Szodorai, A.**, Kuan, Y.-H., Hunzelmann, S., Engel, U., Sakane, A., Sasaki, T., Takai, Y., Kirsch, J., U., Müller, Beyreuther, K., Brady, S., Morfini, G. and Kins, S. (2009) *APP anterograde transport requires Rab3A GTPase activity for assembly of the transport vesicle* J. Neurosci., **29**, 14534-14544
- Tenga, Y.**, Rezvanib, K. and De Biasia, M. (2015) *UBXN2A regulates nicotinic receptor degradation by modulating the E3 ligase activity of CHIP* Biochem. Pharmacol., **97**, 518–530
- Tindi, J.O.**, Cha'vez, A.E., Cvejic, S., Calvo-Ochoa, E., Castillo, P.E. Jordan, B.A. (2015) *ANKS1B gene product AIDA-1 controls hippocampal synaptic transmission by regulating GluN2B subunit localization* J. Neurosci., **35**, 8986–8996
- Wang, J.**, Lu, R., Yang, J., Li, H., He, Z., Jing, N., Wang, X. and Wang, Y. (2015) *TRPC6 specifically interacts with APP to inhibit its cleavage by γ -secretase and reduce $A\beta$ production* Nat. Comm., **6**: 8876
- Wang, T.**, Liu, Y., Xu, X.-H., Deng, C.-Y., Wu, K.-Y., Zhu, J., Fu, X.-Q., He, M. and Luo, Z.-G. (2011) *Lgll activation of Rab10 promotes axonal membrane trafficking underlying neuronal polarization* Devel. Cell **21**, 431–444
- Watanabe, T.**, Hikichi, Y., Willuweit, A., Shintani, Y. and Horiguchi, T. (2012) *FBL2 regulates amyloid precursor protein (APP) metabolism by promoting ubiquitination-dependent APP degradation and inhibition of APP endocytosis* J. Neurosci., **32**, 3352–3365
- Yamamoto, Y.** and Yeung, R.S. (1999) *Subcellular distribution of tuberlin in cells derived from brain and liver* Proc. Amer. Assoc. Cancer Res., **40**, #4515
- Yamamoto, Y.**, Jones, K.A., Mak, B.C., Muehlenbachs, A. and Yeung, R.S. (2002) *Multicompartmental distribution of tuberous sclerosis gene products, hamartin and tuberlin* Arch. Biochem. Biophys., **404**, 210-217
- Zhang, Z.**, Hao, C.-J., Li, C.-G., Zang, D.-J., Zhao, J., Li, X.-N., Wei, A.-H., Wei, Z.-B. et al (2014) *Mutation of SLC35D3 causes metabolic syndrome by impairing dopamine signaling in striatal D1 neurons* PLoS Genet., **10**: e1004124

6b-2. Heart

- Hong, M.**, Kefaloyianni, E., Bao, L., Malester, B., Delaroché, D., Neubert, T.A. and Coetzee, W.A. (2011) *Cardiac ATP-sensitive K^+ channel associates with the glycolytic enzyme complex* FASEB J., **25**, 2456–2467
- Hund, T.J.** and Mohler, P.J. (2011) *Differential roles for SUR subunits in KATP channel membrane targeting and regulation* Am. J. Physiol. Heart Circ. Physiol., **300**, H33–H35
- Lei, B.**, Lionetti, V., Young, M.E., Chandler, M.P., d'Agostino, C., Kang, E., Altarejos, M., Matsuo, K., Hintze, T.H., Stanley, W.C. and Recchia, F.A. (2004) *Paradoxical downregulation of the glucose oxidation pathway despite enhanced flux in severe heart failure* J. Mol. Cell. Cardiol., **36**, 567-576
- Lei, B.**, Matsuo, K., Labinsky, V., Sharma, N., Chandler, M.P., Ahn, A., Hintze, T.H., Stanley, W.C. and Recchia, F.A. (2005) *Exogenous nitric oxide reduces glucose transporters translocation and lactate production in ischemic myocardium in vivo* Proc. Natl. Acad. Sci. USA, **102**, 6966-6971

6b-3. Intestine

- Mansbach, C.M.**, Siddiqi, S. and Mahan, J. (2016) *Vesicle-associated membrane protein 7 is crucial for lipid absorption* J. Investig. Med., **54**, S288
- Siddiqi, S.**, Mathan, J., Siddiqi, S., Gorelick, F.S. and Mansbach, C.M. (2005) *Vesicle-associated membrane protein 7 is expressed in intestinal ER* J. Cell Sci., **119**, 943-950

6b-4. Kidney

- Cai, Y.**, Maeda, Y., Cedzich, A., Torres, V.E., Wu, G., Hayashi, T., Mochizuki, T., Park, J.H., Witzgall, R. and Somlo, S. (1999) *Identification and characterization of polycystin-2, the PKD2 gene product* J. Biol. Chem., **274**, 28557-28565
- Inoue, Y.**, Sohara, E., Kobayashi, K., Chiga, M., Rai, T., Ishibashi, K., Horie, S., Su, X., Zhou, J., Sasaki, S. and Uchida, S. (2014) *Aberrant glycosylation and localization of polycystin-1 cause polycystic kidney in an AQP11 knockout model* J. Am. Soc. Nephrol., **25**, 2789–2799
- Koulen, P.**, Cai, Y., Geng, L., Maeda, Y., Nishimura, S., Witzgall, R., Ehrlich, B.E. and Somlo, S. (2002) *Polycystin-2 is an intracellular calcium release channel* Nat. Cell Biol., **4**, 191-197
- Lemale, J.**, Bloch-Faure, M., Grimont, A., El Abida, B., Imbert-Teboul, M. and Crambert, G. (2008) *Membrane prostegins receptors α and γ in renal epithelium* Biochim. Biophys. Acta, **1783**, 2234-2240
- Mansbach, C.M.**, Siddiqi, S. and Mahan, J. (2016) *Vesicle-associated membrane protein 7 is crucial for lipid absorption* J. Investig. Med., **54**, S288

Newby, L.J., Streets, A.J., Zhao, Y., Harris, P.C., Ward, C.J. and Ong, A.C.M. (2002) *Identification, characterization, and localization of a novel kidney polycystin-1-polycystin-2 complex* J. Biol. Chem., **277**, 20763-20773

Siddiqi, S., Mathan, J., Siddiqi, S., Gorelick, F.S. and Mansbach, C.M. (2005) *Vesicle-associated membrane protein 7 is expressed in intestinal ER* J. Cell Sci., **119**, 943-950

6b-5. Liver

Andrade, J., Zhao, H., Titus, B., Pearce, T. and Barroso, M. (2004) *EF-hand Ca²⁺-binding protein p22 plays a role in microtubule and endoplasmic reticulum organization and dynamics with distinct Ca²⁺-binding requirements* Mol. Biol. Cell, **15**, 481-496

Desai, M.M., Gong, B., Chan, T., Davey, R.A., Soong, L., Kolokoltsov, A.A. and Sun, J. (2011) *Differential, type I interferon-mediated autophagic trafficking of hepatitis C virus proteins in mouse liver* Gastroenterology, **141**, 674-685

Fowler, S., Akins, M. and Bennett, S.A.L. (2016) *Preparation of gap junctions in membrane microdomains for immunoprecipitation and mass spectrometry interactome analysis* In Gap Junction Protocols: Methods Mol. Biol., **1437** (ed. Vinken, M. and Johnstone, S.R.), Springer Science+Business Media, LLC, pp 113-132

Gringeri, E., Carraro, A., Tibaldi, E., d'Amico, F.E., Mancon, M., Toninello, A., Pagano, M.A., Vio, C., Cillo, U. and Brunati, A.M. (2010) *Lyn-mediated mitochondrial tyrosine phosphorylation is required to preserve mitochondrial integrity in early liver regeneration* Biochem. J., **425**, 401-412

Mansbach, C.M., Siddiqi, S. and Mahan, J. (2016) *Vesicle-associated membrane protein 7 is crucial for lipid absorption* J. Investig. Med., **54**, S288

Massarweh, A., Bosco, M., Iatmanen-Harbi, S., Tessier, C., Auberger, N., Busca, P., Chantret, I., Gravier-Pelletier, C. and Moore, S.E.H. (2016) *Demonstration of an oligosaccharide-diphosphodolichol diphosphatase activity whose subcellular localization is different than those of dolichyl-phosphate-dependent enzymes of the dolichol cycle* J. Lipid Res., **57**, 1029-1042

Mhamdi, M., Funk, A., Hohenberg, H., Will, H. and Sirma, H. (2007) *Assembly and budding of a hepatitis B virus is mediated by a novel type of intracellular vesicles* Hepatology, **46**, 95-106

Patton, S.M., Pinero, D.J., Surguladze, N., Beard, J. and Connor, J.R. (2005) *Subcellular localization of iron regulatory proteins to Golgi and ER membranes* J. Cell Sci., **118**, 4365-4373

Salvi, M., Battaglia, V., Brunati, A.M., La Rocca, N., Tibaldi, E., Pietrangeli, P., Marcocci, L., Mondovi, B., Rossi, C.A. and Toninello, A. (2007) *Catalase takes part in rat liver mitochondria oxidative stress defense* J. Biol. Chem., **282**, 24407-24415

Siddiqi, S., Mathan, J., Siddiqi, S., Gorelick, F.S. and Mansbach, C.M. (2005) *Vesicle-associated membrane protein 7 is expressed in intestinal ER* J. Cell Sci., **119**, 943-950

Skarpen, E., Oksvold, M.P., Grøsvik, H., Widnes, C. and Huitfeldt, H.S. (2005) *Altered regulation of EGF receptor signaling following a partial hepatectomy* J. Cell. Physiol., **202**, 707-716

Smith, S.E., Granell, S., Salcedo-Sicilia, L., Baldini, G., Egea, G., Teckman, J.H. and Baldini, G. (2011) *Activating transcription factor 6 limits intracellular accumulation of mutant α 1-antitrypsin Z and mitochondrial damage in hepatoma cells* J. Biol. Chem., **286**, 41563-41577

Trombetta, E.S. and Helenius, A. (1999) *Glycoprotein reglucoylation and nucleotide sugar utilization in the secretory pathway: identification of a nucleoside diphosphatase in the endoplasmic reticulum* EMBO J., **18**, 3282-3292

Yamamoto, Y. and Yeung, R.S. (1999) *Subcellular distribution of tuberin in cells derived from brain and liver* Proc. Amer. Assoc. Cancer Res., **40**, #4515

Yamamoto, Y., Jones, K.A., Mak, B.C., Muehlenbachs, A. and Yeung, R.S. (2002) *Multicompartmental distribution of tuberous sclerosis gene products, hamartin and tuberin* Arch. Biochem. Biophys., **404**, 210-217

6b-6. Melanoma tumours

Lee, E.-Y., Park, K.-S., Yoon, Y.J., Lee, J., Moon, H.-G., Jang, S.C., Choi, K.-H., Kim, Y.-K. and Ghoo, Y.S. (2012) *Therapeutic effects of autologous tumor-derived nanovesicles on melanoma growth and metastasis* PLoS One **7**: e33330

6b-7. Murine embryo

Wang, X., Pralhada Rao, R., Kosakowska-Cholody, T., Masood, M.A., Southon, E., Zhang, H., Berthet, C. et al (2009) *Mitochondrial degeneration and not apoptosis is the primary cause of embryonic lethality in ceramide transfer protein mutant mice* J. Cell Biol., **184**, 143-158

6b-8. Salivary gland

Reddy, R.N., Pena, J.A., Roberts, B.R., Williams, S.R., Price, S.R. and Gooch, J. L. (2011) *Rescue of calcineurin $A\alpha^{-/-}$ mice reveals a novel role for the α isoform in the salivary gland* Am. J. Pathol., **78**, 1605–1613

6b-9. Skeletal muscle

Cacciottolo, M., Belcastro, V., Laval, S., Bushby, K., di Bernardo, D. and Nigro, V. (2011) *Reverse engineering gene network identifies new dysferlin-interacting proteins* J. Biol. Chem., **286**, 5404–5413

Gyobu, S., Miyata, H., Ikawa, M., Yamazaki, D., Takeshima, H., Suzuki, J., Nagata, S. (2016) *A role of TMEM16E carrying a scrambling domain in sperm motility* Mol. Cell. Biol., **36**, 645-659

6b-10. Spleen

Yamamoto, Y., Jones, K.A., Mak, B.C., Muehlenbachs, A. and Yeung, R.S. (2002) *Multicompartmental distribution of tuberous sclerosis gene products, hamartin and tuberlin* Arch. Biochem. Biophys., **404**, 210-217

6b-11. Testis

Yamamoto, Y., Jones, K.A., Mak, B.C., Muehlenbachs, A. and Yeung, R.S. (2002) *Multicompartmental distribution of tuberous sclerosis gene products, hamartin and tuberlin* Arch. Biochem. Biophys., **404**, 210-217

Mini-Review MS07: 4th edition, October 2017

Alere Technologies AS

Axis-Shield Density Gradient Media
is a brand of Alere Technologies AS